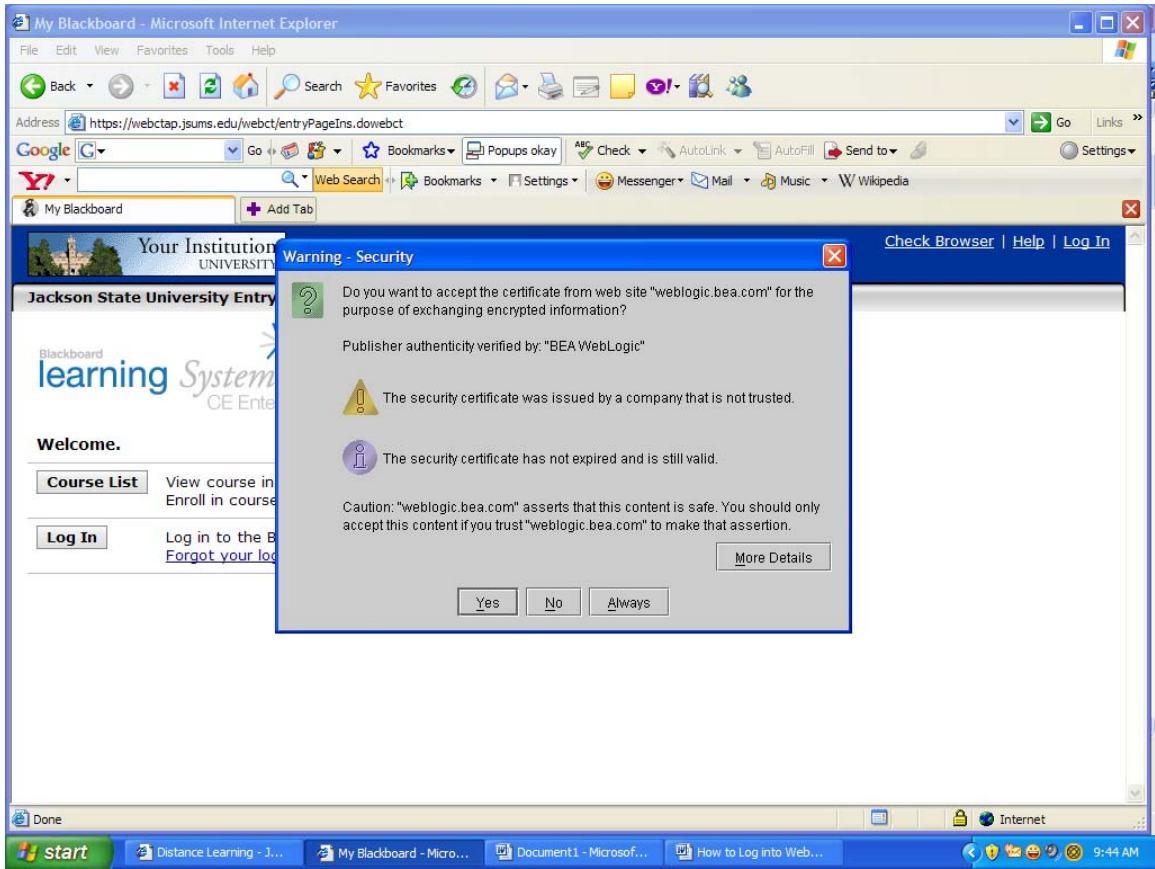


How to Log into WebCT

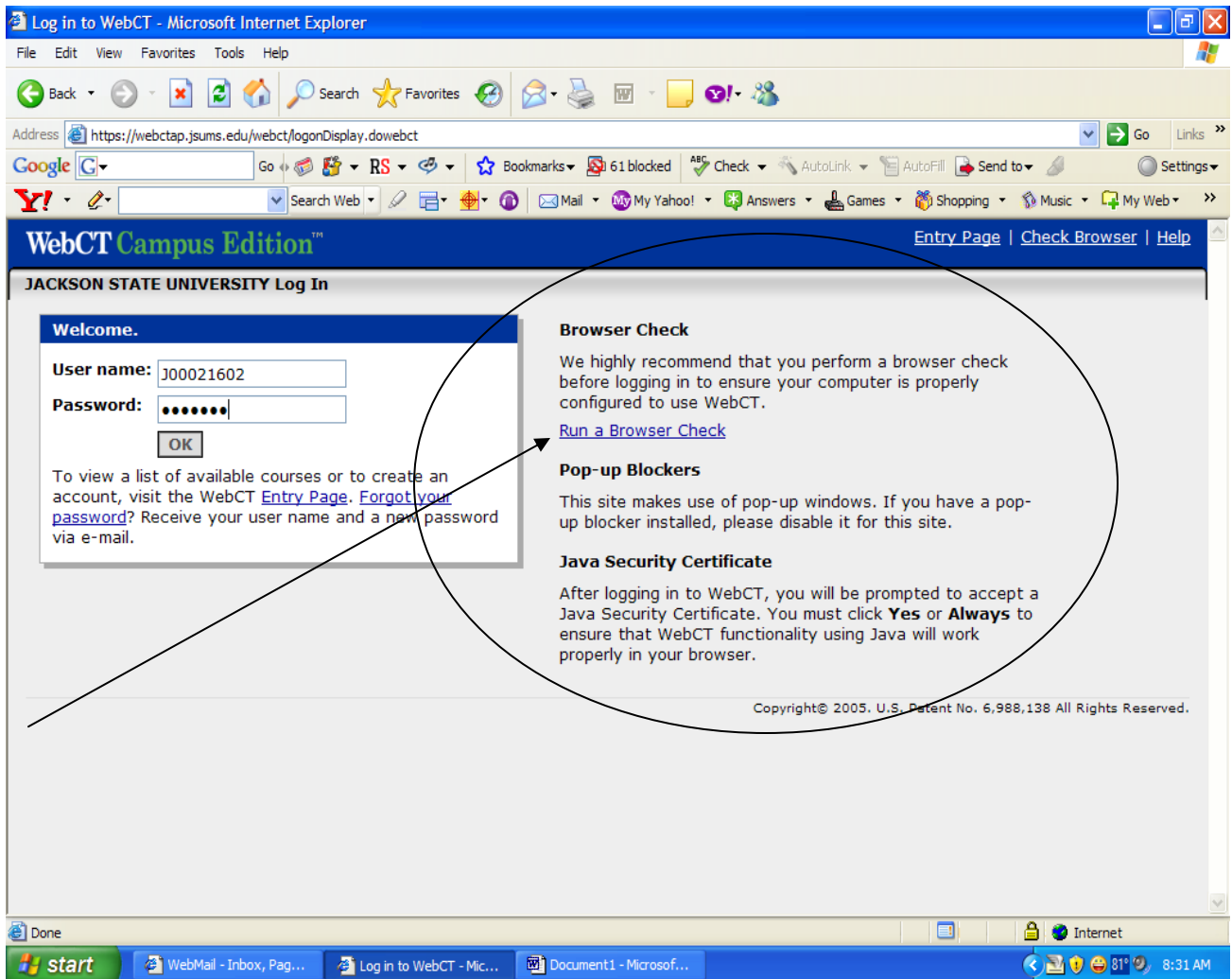
1. All WebCT users must know their NetID to log into WebCT. If you do not know it, go to <http://support.jsums.edu> and follow the prompts. If unsuccessful setting up your NetID call 601-979-1986. You can not proceed until this step has been completed.
2. Go to www.jsums.edu/~dl
3. Click WebCT logon

The screenshot shows the Microsoft Internet Explorer browser window displaying the Jackson State University Distance Learning website. The browser's address bar contains the URL <http://www.jsums.edu/~dl/>. The website's header includes the text "DISTANCE LEARNING Jackson State University" and navigation links for "COURSE OFFERINGS | STUDENT INFO | FACULTY INFO | ONLINE RESOURCES". A prominent "WebCT Log On" button is located on the left side of the page. The main content area features a "Welcome" message and a "News & Announcements" section with dates and session information. A "Quick Links" section at the bottom contains a link to "Distance Learning Forms". The taskbar at the bottom shows the Start button and several open Internet Explorer windows.

4. Accept the Security Warning by pressing always. This window may appear after your login. If it does not appear, go to the next step.



5. Make sure you run a check browser and turn off your pop-up blocker



6. Your username and password is the NetID you set up in step one.
7. Press ok
8. Please note, you will see all enrolled courses in your account (online and traditional).
9. If you need further assistance with WebCT (not NetID) contact Emily A. Miller-Bishop at either 601-979-3975 or Emily.a.miller@jsums.edu