

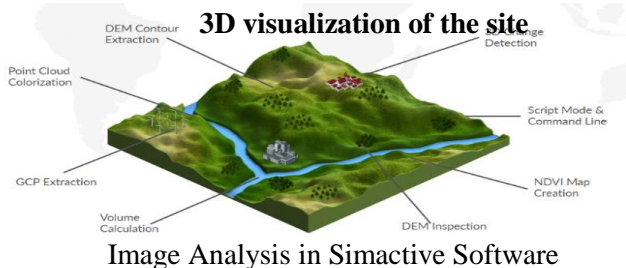
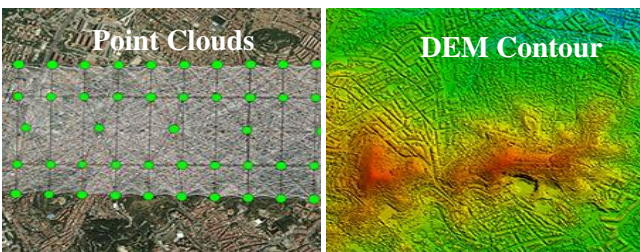
## Civil & Environmental Engineering Receives Two News Grants at Jackson State University



Matrice 200 Drone

(JACKSON, Miss.) – Department of Civil & Environmental Engineering, Industrial Systems & Technology received two new grants from the Mississippi Board of Licensure for Professional Engineers and Surveyors to enhance its surveying and environmental engineering laboratories. The state-of-the-art equipment obtained through these grants address the urgent needs in civil engineering education at Jackson State University, and is also

used in significant research currently underway in the Department. Engineering firms are more reluctant to hire graduates without experience or advanced knowledge of state-of-the-art surveying and hydraulics engineering equipment. Recognizing the importance of becoming a licensed professional engineer, civil engineers must demonstrate knowledge of surveying and environmental engineering areas both in theory and experiments. Thus, it is crucial that students are exposed to the adequate experiments in the laboratory. In preparation as future civil engineers, students enrolled in the surveying and environmental engineering classes will use the newly purchased equipment to validate fundamental surveying and hydraulic theories. New equipment would also boost the students' moral while attracting prospective students to the field of civil engineering. With the very rapid increase in civil engineering enrollment at Jackson State University, it is anticipated that 30 to 40 students per year will be benefited by the acquisition of the equipment. In approximately 10 years the equipment will impact an anticipated 300 to 400 students. The Airborn Survey System, to be acquired as part of the grants, will also be used in transportation and geotechnical engineering research.



The PIs, Dr. Danuta Leszczynska, Professor, and Dr. Sadik Kahn, Assistant Professor, and Co-PI, Dr. Farshad Amini, Professor and Chair of the Department of Civil & Environmental Engineering, Industrial Systems & Technology will oversee these projects. “These grants are important and very helpful since we need to upgrade and enhance our laboratories. It is hoped that the acquisition of these equipment have a long-term positive impact on the civil engineering education in the College of Science, Engineering and Technology at JSU,” said Dr. Farshad Amini, Chair of the Department of Civil & Environmental Engineering, Industrial Systems & Technology.