

---

## University of Wyoming MA in English

1 message

---

**Gwynn A. Lemler** <LemlerG@uwyo.edu>

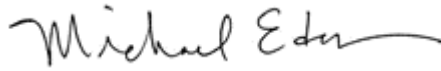
Mon, Oct 14, 2019 at 10:55 AM

To: "candis.p.pizzetta@jsums.edu" <candis.p.pizzetta@jsums.edu>

Dear Candis Pizzetta,

I hope that your semester is ending well. I recently took over as the director of the University of Wyoming's English MA program, and I wanted to share with you the attached information. We offer full funding to all of our students, provide extensive pedagogical training and a manageable one-course teaching assignment, and place our graduates in top PhD programs and professional positions. We value a diverse student body within our program, and strive to create a friendly, supportive environment for all students.

Would you please consider sharing the mailing below with your students? Our Graduate Student Coordinator, Gwynn Lemler, can answer any questions or chat with students via email or phone, as can I. Thank you for your consideration,



Michael Edson

[Apply to the MA in English program at the University of Wyoming!](#)

[View this email in your browser](#)



The University of Wyoming's Master of Arts in English is a two-year program with concentrations in literature and in rhetoric and composition. All students admitted to the MA in English receive full funding, which covers tuition and fees and provides students with a generous stipend for living expenses.



There are many reasons to pursue a Master of Arts in English degree. Maybe an English professor sparked your interest in writing, or a particular writer or school of writers did, and you want to delve deeper. Maybe you get satisfaction out of working with student writers and want to learn more about the teaching of writing. Whether you plan to pursue a PhD, to go directly into teaching, or to explore any number of related professional

opportunities, our MA program provides a welcoming, inspiring, student-focused environment that will give you the skills you need to attain your goals.

### Program Highlights

**Full funding** includes a \$12,330 stipend per academic year, tuition waiver, up to \$1000 for research and travel, and possible teaching opportunities during the summer that may pay up to \$3000 in affordable Laramie.

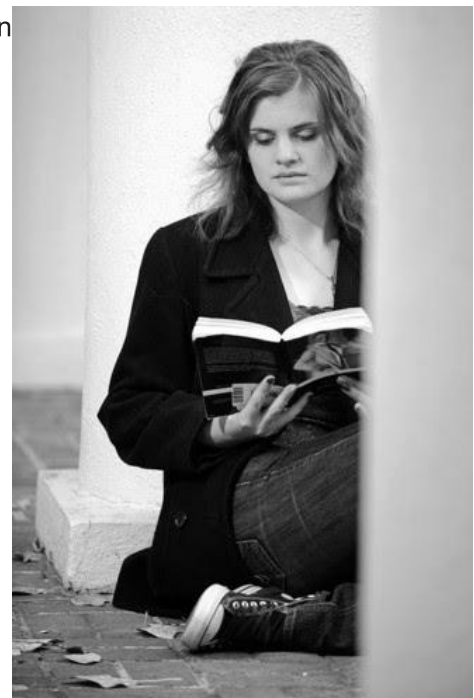
**PhD and job placement** in top programs (including Emory, Michigan, Pennsylvania, Stanford) and in private-/public-sector positions (3M, Library of Congress) across the country.

**Internationally renowned faculty** in a wide variety of fields, with highly flexible curriculum.

**Nationally renowned mentorship** in teaching preparation, and manageable teaching load (1 course per semester)

**Charms and outdoor activities** of Laramie, recently ranked best small college town in the country.

**Joint-degree possibilities** with programs such as Environmental and Natural Resources, Gender and Women Studies, Native American Studies.



*Copyright © 2015 University of Wyoming MA in English, All rights reserved.*

You are trying out MailChimp!

**Our mailing address is:**

University of Wyoming MA in English

Department of English - 3353

1000 E. University Ave.

Laramie, WY 82071

Add us to your address book

Want to change how you receive these emails?

You can update your preferences or unsubscribe from this list

The MailChimp logo is displayed in a white, cursive font within a grey rectangular button.