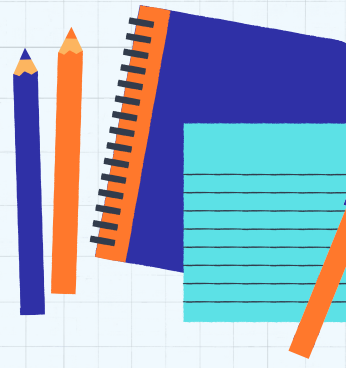


# CONNECTING TO WIFI (EDUROAM)



## How do I connect to **eduroam** from my iPhone?

1. Choose the "Settings" icon
2. Choose "Wi-Fi"
3. Select **eduroam** from the list of networks
4. For "Username", enter your JNumber
5. For "Password", enter your NetID password
6. Tap "Trust" on the right, if the certificate message appears
7. Your device is now connected to the **eduroam** network

## How do I connect to **eduroam** from my laptop/tablet?

1. Choose the "Settings" icon
2. Choose "Wi-Fi"
3. Select **eduroam** from the list of networks
4. For "Username", enter your JNumber
5. For "Password", enter your NetID password
6. Tap "Trust" on the right, if the certificate message appears
7. Your device is now connected to the **eduroam** network

## How do I connect to **eduroam** from my Android device?

1. Choose the "Settings" icon
2. Choose "Wi-Fi"
3. Select **eduroam** from the list of networks
4. For "Identity", enter your JNumber
5. For "Password", enter your NetID password
6. For CA Certificate, Use system certificates
7. For Online Certificate, Use Request status
8. Domain: one.jsu.edu
9. Your device is now connected to the **eduroam** network

**NEED ASSISTANCE, CONTACT THE IT HELPDESK AT 601-979-6400**