

This Newsletter is prepared for campus distribution by the Office of Institutional Research and Planning. Please direct any questions or comments to this office, 979-2615.

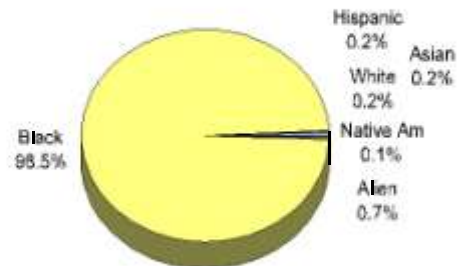
First-Time Freshmen Cohort, Fall 2000

DECLARED MAJORS	#
Healthcare Administration	8
TOTAL, School of Allied Health Sciences	8
Accounting	37
Business Administration	87
Business Education	5
Economics	2
Finance	7
Management	12
Marketing	18
TOTAL, School of Business	168
Child Care & Family Education	4
Educational Technology	2
Elementary Education	39
Health, Physical Educ. & Recreation	11
Social Science Education	2
Special Education	2
TOTAL, School of Education	60
Civil Engineering	12
Computer Engineering	44
Telecommunications Engineering	2
TOTAL, School of Engineering	58
Art	8
Criminal Justice & Corr. Services	27
English	18
Foreign Languages	1
History	29
Mass Communications	2
Music Education	20
Piano Performance	5
Political Science	21
Psychology	37
Sociology	1
Speech	6
TOTAL, School of Liberal Arts	175
Biology	133
Chemistry	7
Computer Science	85
Industrial Arts Education	3
Industrial Technology	28
Mathematics	5
Mathematics Education	3
Meteorology	5
Physics	3
TOTAL, School of Science & Tech.	272
Social Work	20
TOTAL, School of Social Work	20
Undecided	175
TOTAL, FIRST-TIME FRESHMEN	936

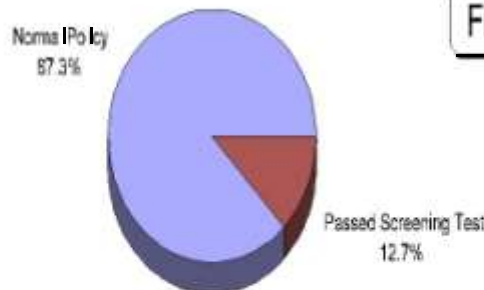
First-Time Freshmen by Gender



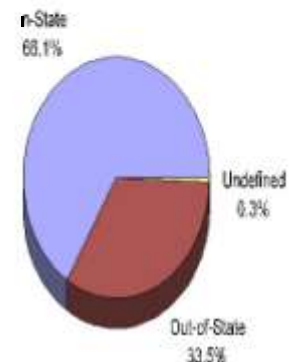
First-Time Freshmen by Ethnicity



First-Time Freshmen by Admit Type*



First-Time Freshmen by Residency



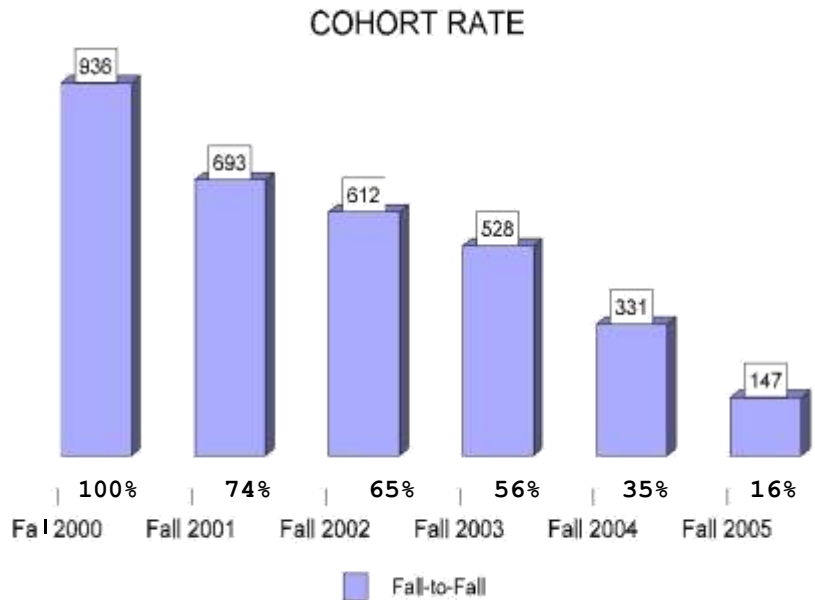
*The criteria under which an undergraduate student was originally admitted to the University.

First-Time Freshmen Cohort, Fall 2000

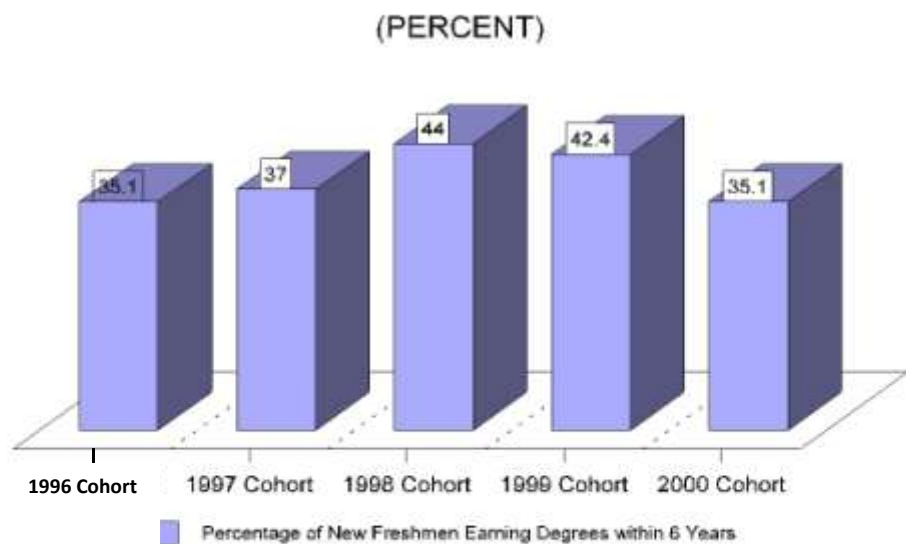
GRADUATES

DEGREES WITHIN 6 YEARS	#
Healthcare Administration	18
TOTAL, School of Allied Health Sci.	18
Accounting	13
Business Administration	20
Business Education	1
Economics	1
Finance	10
Management	9
Marketing	10
TOTAL, School of Business	64
Child Care & Family Education	11
Educational Technology	4
Elementary Education	18
Health, Physical Education & Rec.	7
Social Science Education	1
Special Education	2
TOTAL, School of Education	43
Civil Engineering	2
Computer Engineering	2
TOTAL, School of Engineering	4
Art	5
Criminal Justice & Corr. Services	17
English	15
Foreign Languages	2
History	4
Mass Communications	8
Piano Performance	4
Political Science	1
Psychology	6
Sociology	21
Speech	2
Urban Studies	3
TOTAL, School of Liberal Arts	88
Biology	30
Chemistry	5
Computer Science	19
Industrial Technology	35
Mathematics	3
Meteorology	1
TOTAL, School of Sci. & Tech.	93
Social Work	19
TOTAL, School of Social Work	19
TOTAL, COHORT	329

Retention Rate, Fall 2000



6-Year Graduation Rates



FALL 2000 FIRST-TIME FRESHMEN COHORT

	BY GENDER		BY ETHNICITY			BY ACT SCORE					
	Male	Female	Black	White	Other	28 & Up	22 - 27	19 - 21	16 - 18	15 & Below	NO ACT
ENROLLED	389	547	922	2	12	7	105	200	358	138	128
GRADUATED	106	223	327	-	2	2	58	84	107	44	34
PERCENT	27.2%	40.8%	35.5%	-	16.7%	25.6%	55.2%	42.0%	30.0%	31.9%	26.6%