

This Newsletter is prepared for campus distribution by the Office of Institutional Research and Planning. Please direct questions and comments to this office, extension 2615.

SUMMER SESSION ENROLLMENT TRENDS 2000-2004 (Total Headcount)

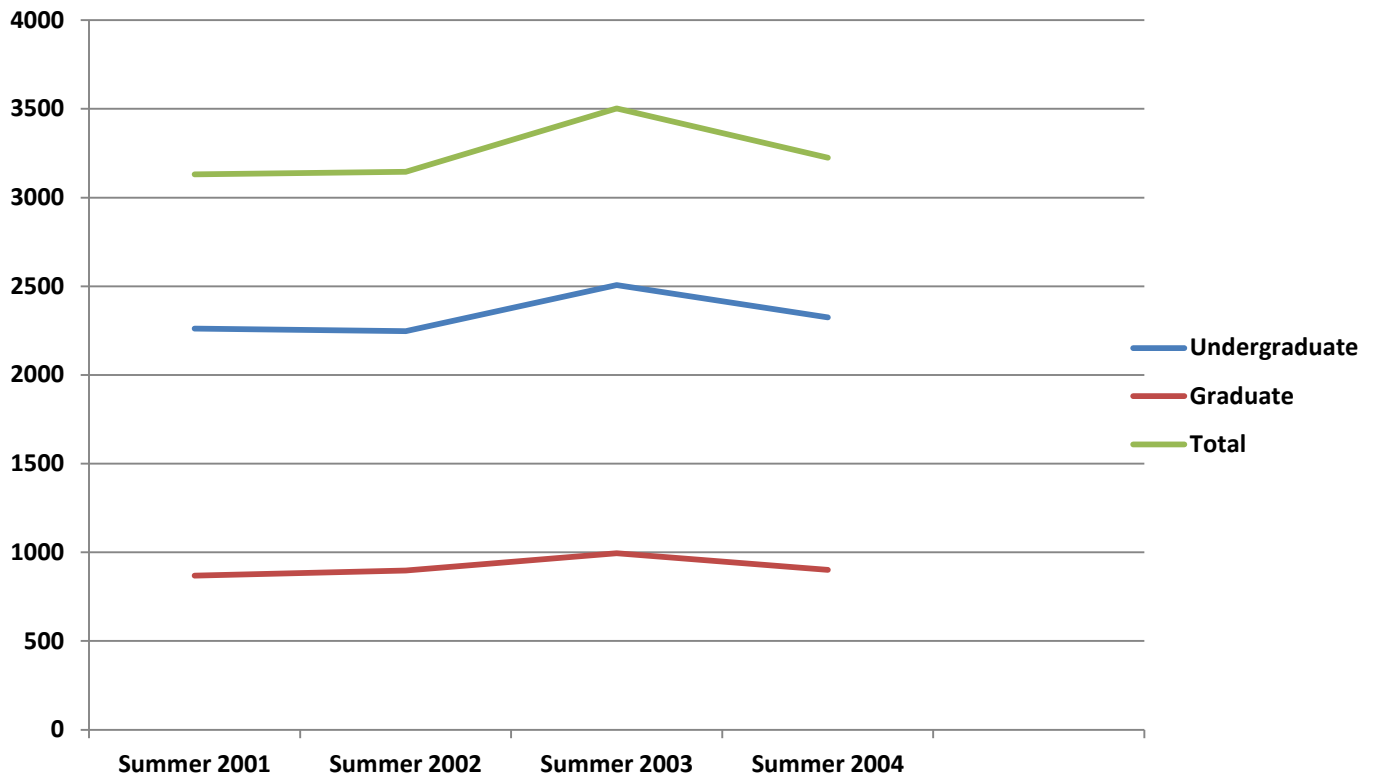


TABLE 1

SUMMER SESSION BY LEVEL 2000 - 2004

	Undergraduate	Graduate	TOTAL
Summer 2000	2,236	780	3,016
Summer 2001	2,262	869	3,131
Summer 2002	2,247	898	3,145
Summer 2003	2,507	996	3,503
Summer 2004	2,324	902	3,225

Table 2
STUDENT ENROLLMENT BY MAJOR - Summer Semester, 2004

Department SCHOOL	UNDERGRADUATE	GRADUATE				TOTAL
		M	S	D	O	
Accounting	97	2	-	-	-	99
Economics, Finance & General Business	183	15	-	8	-	206
Entrepreneurship & Professional Development	14	-	-	-	-	14
Management & Marketing	130	-	-	-	-	130
TOTAL, COLLEGE OF BUSINESS	424	17	-	8	-	449
Educational Leadership	-	42	36	34	-	112
Educational Technology & Support Services	5	-	-	-	-	5
Community, School, & Rehabilitation Counseling	-	115	14	-	-	129
TOTAL, School of Administrative Leadership	5	157	50	34	-	246
Elementary & Early Childhood Education	370	154	18	21	-	563
Health, Physical Education & Recreation	70	17	-	-	1	88
Social & Cultural Studies	12	-	-	-	-	12
Special Education	47	9	5	-	-	61
TOTAL, School of Instructional Leadership	499	180	23	21	-	724
TOTAL, COLLEGE OF EDUCATION & HUMAN DEVELOPMENT	504	337	73	55	1	970
English & Modern Foreign Languages	62	23	-	-	-	85
Mass Communications	62	5	-	-	-	67
Speech Communication	23	-	-	-	-	23
TOTAL, School of Communications	147	28	-	-	-	175
Art	24	-	-	-	-	24
Music	41	1	-	-	-	42
TOTAL, School of Fine and Performing Arts	65	1	-	-	-	66
History and Philosophy	28	14	-	-	-	42
Political Science	48	5	-	-	-	53
Psychology	75	-	-	19	-	94
Sociology & Criminal Justice	142	56	-	-	-	198
TOTAL, School of Social and Behavioral Sciences	293	75	-	19	-	387
TOTAL, COLLEGE OF LIBERAL ARTS	505	104	-	19	-	628
Civil Engineering	18	-	-	-	-	18
Computer Engineering	30	-	-	-	-	30
Computer Science	57	16	-	-	-	73
Telecommunication Engineering	1	-	-	-	-	1
TOTAL, School of Engineering	106	16	-	-	-	122
Biology	221	18	-	23	-	262
Chemistry	14	1	-	4	-	19
Mathematics	12	9	-	-	-	21
Physics	10	3	-	-	-	13
Technology	80	32	-	-	-	112
TOTAL, School of Science & Technology	337	63	-	27	-	427
TOTAL, COLLEGE OF SCIENCE, ENGINEERING & TECHNOLOGY	443	79	-	27	-	549
Public Policy & Administration	-	12	-	21	-	33
Urban Studies, Urban & Regional Planning	5	1	-	2	-	8
TOTAL, School of Policy & Planning	5	13	-	23	-	41
Communicative Disorders	-	8	-	-	-	8
Health Care Administration	61	-	-	-	-	61
Public Health	-	45	-	1	-	46
TOTAL, School of Public Health	61	53	-	1	-	115
Social Work	99	18	-	6	-	123
TOTAL, School of Social Work	99	18	-	6	-	123
TOTAL, COLLEGE OF PUBLIC SERVICE	165	84	-	30	-	279
UNDECIDED	283	53	11	1	2	350
TOTAL, UNIVERSITY	2,324	674	84	140	3	3,225

LEGEND: M = Masters, S = Specialist, D = Doctorate, & O = Other (SPG)