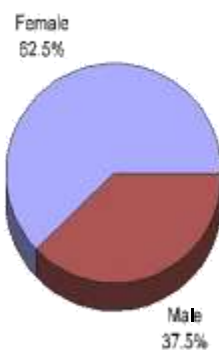


This Newsletter is prepared for campus distribution by the Office of Institutional Research and Planning. Please direct any questions or comments to this office, 979-2615.

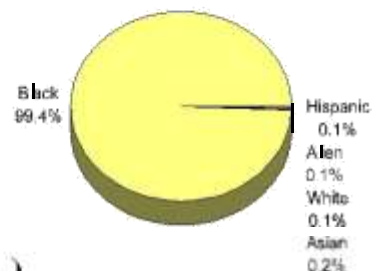
First-Time Freshmen Cohort, Fall 1999

DECLARED MAJORS	#
Accounting	36
Business Administration	80
Business Education	6
Economics	3
Finance	7
Management	16
Marketing	17
Office Administration	1
TOTAL, College of Business	166
Child Care & Family Education	2
Elementary Education	52
Health, Physical Educ. & Recreation	11
Social Science Education	1
Special Education	4
TOTAL, College of Education & Human Development	70
Art	3
Criminal Justice & Corr. Services	23
English	16
History	5
Mass Communications	34
Music Education	17
Piano Performance	2
Political Science	22
Psychology	28
Sociology	2
Speech	6
Urban Studies	3
TOTAL, College of Liberal Arts	161
Biology	126
Chemistry	4
Computer Science	90
Industrial Arts Education	2
Industrial Technology	22
Mathematics	19
Meteorology	4
Physics	3
TOTAL, College of Science, Engineering & Technology	270
Social Work	15
TOTAL, College of Public Service	15
Undecided	120
TOTAL, FIRST-TIME FRESHMEN	802

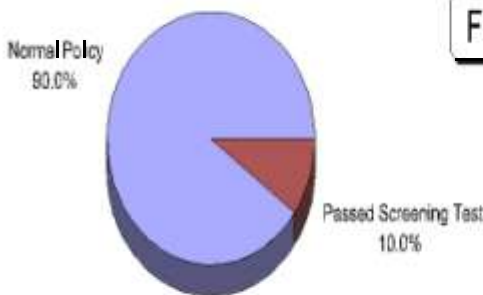
First-Time Freshmen by Gender



First-Time Freshmen by Ethnicity



First-Time Freshmen by Admit Type*



First-Time Freshmen by Residency



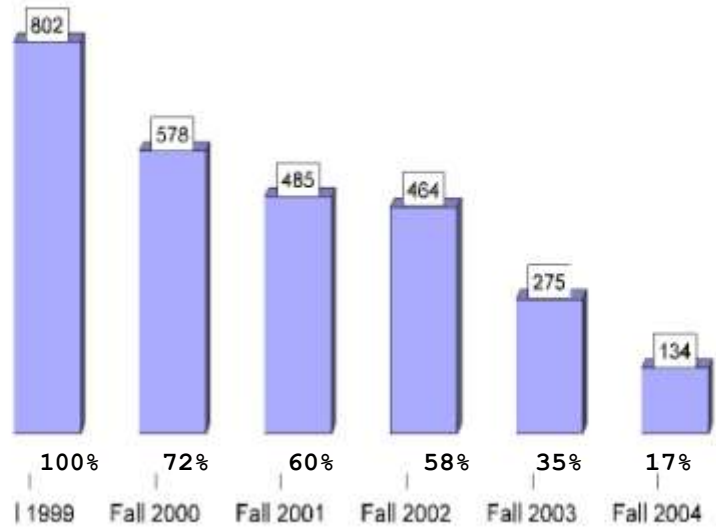
*The criteria under which an undergraduate student was originally admitted to the University.

First-Time Freshmen Cohort, Fall 1999

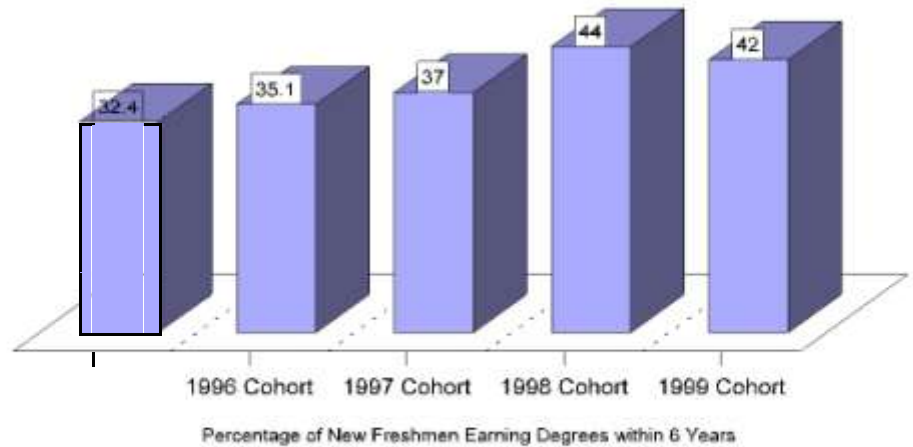
GRADUATES

DEGREES WITHIN 6 YEARS	#
Health Care Administration	12
TOTAL, School of Allied Health Sci.	12
Accounting	17
Business Administration	27
Economics	1
Finance	12
Management	15
Marketing	14
TOTAL, School of Business	86
Child Care & Family Education	8
Elementary Education	16
Health, Physical Education & Recreation	4
Social Science Education	2
Special Education	2
TOTAL, School of Education	34
Art	4
Criminal Justice & Corr. Services	19
English	20
History	3
Mass Communications	18
Music (Piano Performance)	1
Music Education	2
Political Science	12
Psychology	15
Sociology	2
Speech	8
Urban Studies	2
TOTAL, School of Liberal Arts	106
Biology	29
Chemistry	4
Computer Science	21
Industrial Technology	32
Mathematics	2
Mathematics Education	1
Meteorology	2
Physics	1
TOTAL, School of Sci. & Tech.	92
Social Work	10
TOTAL, School of Social Work	10
TOTAL, COHORT	340

Retention Rate, Fall 1999



6-Year Graduation Rates (PERCENT)



FALL 1999 FIRST-TIME FRESHMEN COHORT

	BY GENDER		BY ETHNICITY					BY ACT SCORE					
	Male	Female	Black	Hispanic	Asian	White	Alien	28 & Up	22 - 27	19 - 21	16 - 18	15 & Below	NO ACT
ENROLLED	301	501	797	1	2	1	1	8	89	211	280	94	120
GRADUATED	105	235	339	-	1	-	-	3	54	111	101	33	38
PERCENT	34.9%	46.9%	42.5%	-	50.0%	-	-	37.5%	60.7%	52.6%	36.1%	35.1%	31.7%