

Jackson State University
College of Public Service • School of Social Work

**Tenth Annual
Mississippi Child Welfare Institute Conference
January 25-27, 2012**



for a New Decade of Transformational Services
with Children and Families

Jackson Marriott Hotel • 200 East Amite Street • Jackson, MS 39201

**TENTH ANNUAL
MISSISSIPPI CHILD WELFARE INSTITUTE CONFERENCE**

***“Building Bridges for a New Decade of Transformational Services with
Children and Families”***

**Sponsored by
School of Social Work
College of Public Service
Mississippi Child Welfare Institute**

Co-Sponsors

***Bronze*
Children’s Defense Fund
Mississippi Department of Mental Health-Bureau of Alcohol and Drug Abuse**

***Copper*
Another Chance Enterprise
Catholic Charities
Mississippi Children’s Home Services/CARES Center, Inc.
Jackson Medical Mall Foundation
Mississippi Department of Health, Office of
Child and Adolescent Health
Mississippi Department of Health, Office of
Preventive Health
Mississippi Department of Mental Health, Division of Children and Youth
Services**

***Other Contributors*
Mississippi Blood Services, Inc.
Innovative Behavioral Services**

The 2012 Mississippi Child Welfare Institute Conference offers a maximum of 11
Continuing Education Hours (CEHs).

BENNIE G. THOMPSON
SECOND DISTRICT, MISSISSIPPI

COMMITTEE ON
HOMELAND SECURITY
RANKING MEMBER

WASHINGTON OFFICE:
2466 RAYBURN HOUSE OFFICE BUILDING
WASHINGTON, DC 20515-2402
(202) 225-5876
(202) 225-5898: FAX

E-Mail: benniethompson@mail.house.gov
Home Page: <http://www.benniethompson.house.gov>

CONGRESSIONAL BLACK CAUCUS
CONGRESSIONAL GAMING CAUCUS
CONGRESSIONAL PROGRESSIVE CAUCUS
CONGRESSIONAL SPORTSMEN'S CAUCUS
CONGRESSIONAL RURAL CAUCUS
HOUSE EDUCATION CAUCUS

Congress of the United States
House of Representatives
Washington, DC 20515-2402

January 25, 2012

College of Public Service
School of Social Work
3825 Ridgewood Road
Jackson, MS 39211

Dear Friends:

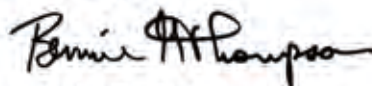
Greetings from Mississippi's Second Congressional District! I am honored to be a part of your 10th Annual Mississippi Child Welfare Institute Conference.

It is always a special honor to play a small part in your annual conference. In speaking with several social workers who attend the conference each year, I understand that this is a much anticipated event because of the information provided, networking opportunities and motivational experience. These kinds of testimonials speak volumes to the great influence the School of Social Work is having in making a difference in the lives of our children, their families and the communities in which we live.

I applaud each of you and ask that you continue your commitment to the children of Mississippi who depends upon the services that you and your respective agency offer. The theme you have chosen this year, "*Building Bridges for a New Decade of Transformational Services with Children and Families*" is a reminder that we must stay vigilant in our resolve to maintain a high level of service to children even under very tight budgetary constraints and other negative forces.

I wish you the very best. Keep the Faith!

Sincerely,



Bennie G. Thompson
Member of Congress

BGT:fw

107 WEST MADISON STREET
P.O. Box 610
BOLTON, MS 39041
(601) 866-9003
(601) 866-9036: FAX
(800) 355-9003: IN ST.

509 HIGHWAY 82 WEST
GREENWOOD, MS 38930
(662) 455-9003
(662) 453-0118: FAX

510 COURTHOUSE LANE
GREENVILLE, MS 38701
(662) 335-9003
(662) 334-1304: FAX

3607 MEDGAR EVERS BOULEVARD
JACKSON, MS 39213
(601) 946-9003
(601) 982-5337: FAX

263 EAST MAIN STREET
P.O. Box 356
MARKS, MS 38846
(662) 326-9003
(662) 326-9003: FAX

MOUND BAYOU CITY HALL
P.O. Box 679
106 GREEN AVENUE, SUITE 106
MOUND BAYOU, MS 38762
(662) 741-9003
(662) 741-9002: FAX

Office of the Mayor
Harvey Johnson, Jr., Mayor



219 South President Street
Post Office Box 17
Jackson, Mississippi 39205-0017
Telephone: 601-960-1084
Facsimile: 601-960-2193

Greetings:

On behalf of the citizens of Jackson, I welcome you to the Jackson State University School of Social Work's Tenth Annual Mississippi Child Welfare Institute Conference. As Mayor, I am pleased that such a prestigious event is being held in our city.

I commend the organizers of this event, as well as the participants for your continued commitment to helping children and families. Your work is invaluable, and I admire you for looking ahead and discussing new and innovative strategies that can be even more effective as time goes on.

In addition, I commend the social work professionals who so often go above and beyond the call of duty to assist children and families. Your work is making a difference in society.

I know that you will gain a lot of valuable information during this conference, and I trust that everyone will have a great time. For those of you visiting, I trust that you will find Jackson to be very hospitable and accommodating, and I encourage you to get out and take advantage of some of the fabulous shopping, dining and sightseeing opportunities available in our City.

Sincerely,

A handwritten signature in black ink, appearing to read "H. Johnson, Jr.", is written over the printed name.

Harvey Johnson, Jr.



JACKSON STATE UNIVERSITY

JACKSON, MISSISSIPPI 39217

OFFICE OF
THE PRESIDENT

(601) 979-2323
FAX NO. (601) 979-2948

January 25, 2012

Dear Conference Participants:

It gives me great pleasure to welcome each one of you to the Tenth Annual Mississippi Child Welfare Institute Conference sponsored by the School of Social Work, College of Public Service at Jackson State University. The theme for this year, "*Building Bridges for a New Decade of Transformational Services with Children and Families*," is quite timely as Jackson State University continues to enhance the state, nation, and world with several educational, research, and service initiatives. As we build bridges through partnerships and collaborations, we will forge ahead together to improve the health, safety, and well-being of our children and youth. We, therefore, encourage you to engage fully with the excellent plenary speakers and workshop presenters at the conference to explore practices, policies, and services for children and families. I trust that your participation provides you with an opportunity to share important knowledge and skills that will enhance your work in the area of child and family welfare.

I also wish to thank the committee members and volunteers who have expended much time and effort to make the conference a successful and rewarding learning experience. We greatly appreciate your participation, and Jackson State University is pleased to be a part of this notable effort to improve services for children and families. If we can assist you in any way during the conference, please do not hesitate to call on us.

Sincerely,

A handwritten signature in blue ink that reads "Carolyn W. Meyers". The signature is written in a cursive style with a long, sweeping underline.

Carolyn W. Meyers
President



Jackson State University

1400 J.R. Lynch Street
P.O. Box 17199
Jackson, Mississippi 39217-0299

Office of the Provost/Academic Affairs

Phone: (601) 979-2244
Fax: (601) 979-8246

January 26, 2012



Dear Conference Participants:

It gives me great pleasure to bring you greetings from the Office of the Provost and Vice President for Academic Affairs at Jackson State University. We are delighted that you have chosen to join our faculty, students, and community partners to pursue the all important agenda of improving the lives of vulnerable children and families in our own State of Mississippi, our country, and the world. The Tenth Annual Mississippi Child Welfare Institute Conference marks a full decade of faculty, student, and staff development in the forms of research, practice initiatives, and policy imperatives. This year's theme, *"Building Bridges for a New Decade of Transformational Services with Children and Families"* is a testament to your commitment, as well as ours, to support families in their efforts to ensure our children's successful journey through childhood and adolescence.

The caliber of the plenary and workshop presenters for this year's conference is exceptional, and you will have an opportunity to be involved in discussions on a wide range of topics related to transforming services with children and families. Your commitment to providing quality services for vulnerable children and families is greatly admired and deeply appreciated. I encourage you to take advantage of the research, practice, and policy sessions and the networking opportunities that will be offered.

I also wish to thank the conference chair, co-chairs, other committee members, and host of volunteers for their time and effort to ensure that the conference is successful. The Mississippi Child Welfare Institute Conference Planning Committee in the School of Social Work, College of Public Service, along with its partners and collaborators, have done an excellent job in planning and organizing the conference for you and your staff, and for our students and faculty. Please continue your work with us and in your respective neighborhoods for the health, well-being, and safety of all our children and families.

Sincerely,

A handwritten signature in cursive script that reads "Mark G. Hardy".

Mark G. Hardy
Provost and Vice President for Academic Affairs



JACKSON STATE UNIVERSITY

COLLEGE OF PUBLIC SERVICE

Office of the Dean

350 W. Woodrow Wilson Drive • Suite 301 • Jackson, Mississippi 39213-7681
Telephone: 601-979-8836 • Fax: 601-979-8837 • E-mail: mario.j.azevedo@jsums.edu

January 25, 2012



Dear Conference Participants:

Welcome to the Mississippi Child Welfare Conference sponsored by Jackson State University School of Social Work. This year's conference takes a look at transformational services that will build bridges of success for children and families. This conference and Mississippi's vast network of social services agencies provides an excellent foundation for building bridges. Social workers, administrators, students and private citizens will have opportunities to build bridges through collaborative efforts during the workshops.

As Interim Dean of the College of Public Service, I commend Dr. Gwendolyn S. Prater, Founding Dean for the College and the School of Social Work, and her committee for organizing the conference. I hope that you will use this conference as an opportunity to network with friends and colleagues, sharing and exchanging information that will focus on providing for the needs and welfare of the children of the State. Enjoy the conference and we look forward to seeing you again next year. Best wishes from the faculty, administrators, staff, and students of the College of Public Service.

Sincerely,

Mario J. Azevedo, Ph.D., M.P.H.
College of Public Service

"Empowering People Through Public Service"

Jackson State University

College of Public Service

School of Social Work

Office of the Associate Dean

3825 Ridgewood Road, IHL – 102 ♦ Jackson, Mississippi 39211-6497
Telephone: 601-432-6828 ♦ Fax: 601-432-6827



Dear Conference Participants:

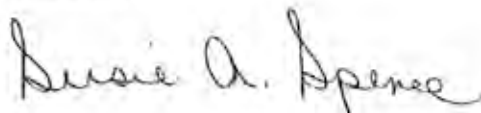
I welcome you to our Tenth Annual Mississippi Child Welfare Institute Conference on behalf of the School of Social Work at Jackson State University. We are very pleased to have you as our guest at this forum, which focuses on *"Building Bridges for a New Decade of Transformational Services with Children and Families."* This year's conference is particularly eventful since it marks a decade of our sponsoring such an event on the welfare of children and families.

The conference provides an array of theme-focused presentations in the areas of research, teaching, practice, policy and advocacy for your selection and engagement. We think you will find them quite informative and useful in your respective professional capacities as you assist in *making a difference* in the lives of children and families in Mississippi and elsewhere.

I acknowledge the work of our conference planning committee members, who spent considerable time in planning the conference. I also extend appreciation to the presenters who prepared papers and other presentations.

Enjoy the conference, and please let us know if you desire our assistance.

Sincerely,



Susie A. Spence
Interim Associate Dean

MISSISSIPPI CHILD WELFARE INSTITUTE

JACKSON STATE UNIVERSITY • COLLEGE OF PUBLIC SERVICE • SCHOOL OF SOCIAL WORK
350 West Woodrow Wilson Drive, Suite 2900B • JACKSON, MISSISSIPPI 39213-7681
Telephone (601) 979-1123 • Fax (601) 979-1161



Dear Conference Participants:

It is indeed my pleasure to welcome you to the Tenth Annual Mississippi Child Welfare Institute Conference! We have certainly expanded the conference during these last 10 years with variety and expert content while providing engaging network opportunities for each one of you. Now, as we prepare ourselves for a new decade of transformational services with children and families, I invite you to continue the journey with us to make a positive difference in the lives of vulnerable children and families in our state, across this beautiful country, and in the global community.

The Planning Committee for the 2012 Conference has diligently pursued and successfully selected invited plenary and juried workshop presentations that are designed to ensure your involvement in best and promising practices. Its work thus ensures you, the participants, have the opportunity to use research and evidence-based practice to inform your work with children and families. The tenth anniversary theme, "*Building Bridges for a New Decade of Transformational Services with Children and Families*," sets the stage for our partnership over the next decade to work together for child safety, health, and well being in strong, caring, and self-sufficient families. We are the social workers and other professionals who take the time and make the effort to expand our knowledge, further crystallize professional values and ethics, and enhance our skills to best serve children and families. Please give yourselves a raving round of applause!

Sincerely,

A handwritten signature in black ink that reads "Gwendolyn Spencer Prater". The signature is fluid and cursive, with the first letters of the first and last names being capitalized and prominent.

Gwendolyn Spencer Prater, Ph.D.
Dean Emerita and Consultant

MISSISSIPPI CHILD WELFARE INSTITUTE AND CONFERENCE HISTORY

The Mississippi Child Welfare Institute was established at Jackson State University in 2003 as a part of the School of Social Work. The impetus to begin the Institute resulted from a grant awarded by the Children's Bureau, U.S. Department of Health and Human Services during the time period, 2000 to 2004. The proposal was developed by Gwendolyn Spencer Prater, PhD, MSW, who was then Dean of the School of Social Work. The Institute and conference began prior to the organization of the academic Colleges at Jackson State University.

The proposal submitted to the Children's Bureau resulted in a funded grant which permitted 26 committee-selected, dedicated students to participate in the education project. All of the social work students were provided tuition, stipends, and special training and educational opportunities both in-state and across the country at national conferences with the goal of preparing them for careers in child welfare. The students graduated and many attained social work positions in the field of child welfare. Mrs. Wanda Gilliam, MSW, Deputy Director of Programs, Mississippi Department of Human Services, was the liaison with the School of Social Work during the grant period and actively and successfully facilitated productive experiential educational opportunities for students with the Division of Family and Children's Services.

Furthermore, during the 2002-2003 academic year, Jackson State University's School of Social Work, in partnership with other state institutions of higher learning, and in collaboration with the Mississippi State Department of Human Services, under the capable leadership of Mrs. Thelma Brittain, MSW, initiated the Title IV-E Program in Child Welfare. The program was readily supported by the Mississippi Legislature, with strong leadership from the late Representative Charlie Capps, Chair of the House Appropriations Committee. Jackson State University's administration also provided strong support for the Institute and the conference. The School of Social Work programmatic and administrative leadership team included Drs. Prater and Ruth M. Williams as the Principal Investigator and Co-Principal Investigator, respectively, and Ms. Velma Hankins, MSW, as the Program Administrator.

The program continued for approximately three and one-half years, with Jackson State University serving as the lead institution for the majority of that time span, with the final program year being rotated to one of the other state institutions of higher education. Numerous students at the baccalaureate and master's levels were educated and provided training for child welfare practice with vulnerable populations. In addition, during this three-year period, training was also developed and provided for foster and adoptive parents, and public child welfare staff. Since that time, there has not been a consortium of state schools and programs of social work jointly engaged in Title IV-E academic programming with the Mississippi Department of Human Services.

The Mississippi Child Welfare Institute at Jackson State University, however, continues to offer its annual conference for professional development of child welfare practitioners, supervisors, administrators, faculty, and students in Mississippi, other states in the Southeastern Region, and indeed across the United States of America. The Institute partners with public and private agencies and organizations as it works to

improve services to children and families including but not limited to: the Mississippi State Departments of Human Services, Health, and Mental Health, the Children's Defense Fund (Southern Regional Office), Mississippi Children's Home Services and CARES Center, Catholic Charities, and the Casey Family Programs and Marguerite Casey Foundations.

Conferences (2003-2012):

*2003: Social Workers' Challenge: Changing the Lives of Mississippi's Children and Families**

2004: Mississippi's Challenge: Rebuilding the Village

2005: Social Work: Empowering Mississippi's Children and Families through Public Service^

2006: Working Together for What Matters Most: Children and Families

2007: United Voices Committed to Helping Our Children

2008: The Many Faces of Child Welfare: A Rainbow of Diversity

2009: Child Poverty: Facing the Challenges, Creating Opportunities

2010: Child Welfare: Building Community Partnerships for Safe and Healthy Children and Families

2011: Building Community Partnerships for Safe and Healthy Children and Families

2012: Building Bridges for a New Decade of Transformational Services with Children and Families

Note: All conferences have been held in Downtown Jackson;

**Crowne Plaza Hotel (2003-2004)*

^Jackson Marriott Hotel (2005-2012)

OPENING PLENARY SPEAKER



Terry Morris, PhD, is an electrical and systems engineer as well as a national speaker supporting philanthropy, community service and child advocacy in multiple countries. Some of his national speaking engagements have included the White House, the Pentagon, the Nuclear Regulatory Agency, and other federal agencies. Dr. Morris is the Manager for Integrated Hazard Analysis within the Safety-Critical Avionics Systems Branch at the National Aeronautics and Space Administration (NASA) Langley Research Center. His previous work experiences include dynamics

research for space station robotics, decision expert on New York City's safety-critical subway system, and manager of integrated software hazard analysis for NASA's Constellation Program. Dr. Morris serves as chairman of the United Way Virginia Peninsula Board, chairman of the Federal Emergency Management Association (FEMA) Food and Emergency Shelter Board, and serves on a number of other boards and councils. He is also a former foster child.

Dr. Morris earned a Bachelor of Science in electrical engineering from Mississippi State University, a Master of Science in electrical engineering at Old Dominion University, and was a recipient of the George M. Low Fellowship at the Massachusetts Institute of Technology. Dr. Morris received his Ph.D. in systems engineering from the University of Virginia.

PLENARY SPEAKER



Juli Alvarado is the President and Owner of Coaching for LIFE!, a personal and professional development firm with an emphasis on maximizing human potential through relationships, at home and in the office. Mrs. Alvarado is an internationally recognized consultant, motivational speaker and expert in the areas of relationships, attachment, trauma, and treatment of high risk, behaviorally disordered children as well as the families that care for them.

She has spent the past 20 years working with organizations and clients in foster care and adoption. Currently, Mrs. Alvarado provides expert consultation for state departments, judicial branches, agencies, corporations, and families around the United States and Canada.

Juli's keynote offerings are known to move the audience to tears and laughter, time-after-time, as she works with foster parents using real-life examples as the mother of five, and owner and president of a successful consulting and therapy practice. Audiences are empowered as they learn specific strategies to bring increased peace into their work settings, homes, and lives.

PLENARY SPEAKER



Anton J. Gunn, M.S.W. is the Regional Director for Region IV with the United States Department of Health and Human Services. He has held this position since August 2010. Mr. Gunn served in the South Carolina House of Representatives representing District 79 where he was the first African American to represent the area. Mr. Gunn served as a member on the Medical, Military, and Public and Municipal Affairs committees.

Mr. Gunn began his career as a health care reformer. His work included consumer advocacy on issues such as managed care policy, HIV/AIDS funding, and other human service issues. He served on the White House Health Care Task Force of State Legislators for Health Reform. Mr. Gunn was previously a motivational speaker, leadership consultant and author. His first book, *The Audacity of Leadership*, was released in 2009. He has been featured in a number of the major media outlets across the country including the *Los Angeles Times* and *Time Magazine* and appeared on major television programs such as *Good Morning America (ABC)* and the *Situation Room (CNN)*, and others.

Mr. Gunn earned both the B.A. in History and the Master of Social Work degrees from the University of South Carolina. He is married to Tiffany Johnson-Gunn of Columbia, South Carolina and they have one daughter, Ashley.

CLOSING LUNCHEON SPEAKER



Rowena Wilson, D.S.W. is the Associate Dean, Professor and Director of the Ph.D. Program, in the School of Social Work, Norfolk State University (NSU). Dr. Wilson joined the faculty at NSU in 1986 and has received recognition for her outstanding scholarship, grantsmanship and leadership. Her funded research has focused on special needs adoption, post-legal adoption services, and Temporary Assistance for Needy Families services. For more than 20 years, she has received federal and state funding for child welfare, foster care, and domestic violence prevention. Dr. Wilson is Principal Investigator and NSU serves as the lead university for the CRAFTT Program, a statewide foster, adoptive, kinship care, and resource family training program.

Dr. Wilson has served on national boards and committees including the Council of Social Work Education Commission on Administrative and Legislative Policy, and as chair of the *Group for the Advancement of Doctoral Education in Social Work*. She has also served as co-editor of publications that focus on best practices and quality in doctoral education and kinship care. She shares her expertise on child welfare issues as a guest speaker on local radio and television talk shows and at community forums.

Dr. Wilson earned her master's and doctoral degrees in social work from Howard University School of Social Work in Washington, D.C. She is also a native of Washington, D.C.

FIELD EDUCATION SYMPOSIUM SPEAKER



Mary Nelums, PhD, LCSW is a consultant/trainer/therapist. She has worked in the School of Social Work at Jackson State University as a faculty member. Serving in a number of capacities, Dr. Nelums has over 45 years of experience working with various social service agencies and schools, and as a consultant and therapist. In addition, she has an array of experience in program development and grant writing. Dr. Nelums has presented papers at numerous local, state, and national professional conferences. She is affiliated with the National Association of Social Workers, served on the governor's task force on infant mortality and on professional boards and organizations.

Dr. Nelums earned both her Master of Social Work and Ph.D. degrees in Social Work at the University of Illinois at Chicago.

SPECIAL YOUTH EMPOWERMENT SESSION



Ashley Jackson entered foster care in Missouri at the age of 16 where she was placed in kinship care for five years. She remained in care until the age of 21. Ashley participated in an All-Star internship with FosterClub and served on a leadership team that travelled across the nation to encourage and empower youth in foster care and also campaigned for positive foster care change in legislation that affects foster youth. She also served as an intern at the National Resource Center for Youth Development that provided training and technical assistance to states, tribes and territories through a cooperative agreement with the Children's Bureau, U. S. Department of Health and Human Services. Ashley is the Director of Social Marketing with the Mississippi Transitional Outreach Project in Jackson.

Ms. Jackson is passionate about assisting and promoting successful transitions for older youth from foster care to independent living.



Cassio Batteast established Fathers Active In Their Hoods, (F.A.I.T.H.) Inc., a non-profit organization that is designed to improve the quality of life for young men, and provide resources and training for single/non-custodial fathers in 2007. He also established his own consultant agency to assist individuals, families, community organizations, and faith-based organizations in developing businesses, community programs, and obtaining resources. Mr. Batteast has been recognized locally and nationally for his commitment to disadvantaged communities, families, and youth. He graduated with honors from Tougaloo College and received a Bachelor of Arts Degree in Child Development. He is currently pursuing a Master of Arts Degree in Urban and Regional Planning (Community Development and Housing) at Jackson State University.



Shelley Johnson is the Founder and Executive Director of Rise Above for Youth, an organization that seeks to empower youth to successfully transition from foster care and homelessness to self-sufficiency. Ms. Johnson is interested in issues facing Lesbian, Gay, Bisexual, Transgender, and Questioning (LGBTQ) Youth. She is an activist for reform and awareness of LGBTQ issues. Ms. Johnson also serves as the Executive Director of Partners to End Homelessness in Jackson where her encounters with local shelters make her acutely aware of the gap in service that exists for youth and young adults based upon their sexual orientation and the condition of being homeless.

Ms. Johnson earned a Bachelor's degree in Human and Social Services Administration and she is currently pursuing a Master's degree in Nonprofit Management.

**TENTH ANNUAL
MISSISSIPPI CHILD WELFARE INSTITUTE CONFERENCE**

***“Building Bridges for a New Decade of Transformational Services with
Children and Families”***

Conference Overview

Wednesday, January 25, 2012

5:30 p.m. – 6:30 p.m..... **Special Youth Empowerment Session**
6:30 p.m. – 7:30 p.m..... **Musical Entertainment**

Thursday, January 26, 2012

7:00 a.m. – 8:30 a.m..... **Registration**
8:30 a.m. – 9:45 a.m. **Opening Plenary Session**
9:45 a.m. – 10:00 a.m..... **Break**
10:00 a.m. – 11:30 a.m. **Concurrent Sessions**
11:30 a.m. – 1:00 p.m. **Lunch on Your Own**
1:00 p.m. – 2:00 p.m..... **Concurrent Sessions**
2:05 p.m. – 3:05 p.m. **Concurrent Sessions**
3:05 p.m. – 3:20 p.m..... **Break**
3:20 p.m. – 4:20 p.m..... **Concurrent Sessions**
4:30 p.m. – 5:30 p.m..... **Plenary Session**
6:00 p.m. – 9:00 p.m..... **Tenth Year Anniversary Celebration**

Friday, January 27, 2012

8:20 a.m. – 9:15 a.m..... **Plenary Session**
9:20 a.m. – 10:20 a.m..... **Concurrent Sessions**
10:25 a.m. – 10:40 a.m..... **Break**
10:45 a.m. – 12:00 p.m. **Concurrent Workshops**
12:15 p.m. – 1:45 p.m..... **Closing Luncheon**

**TENTH ANNUAL
MISSISSIPPI CHILD WELFARE INSTITUTE CONFERENCE**
*“Building Bridges for a New Decade of Transformational Services with
Children and Families”*

**Sponsored by
Jackson State University
Mississippi Child Welfare Institute, School of Social Work**

Wednesday, January 25, 2012

SPECIAL YOUTH EMPOWERMENT SESSION

Location: Windsor III, IV & V
5:30 p.m. - 6:30 p.m.

Presider	Mario Johnson, Director Independent Living - Resource Unit Division of Family and Children's Services Mississippi Department of Human Services Jackson, MS
Welcome	Layla Fitzgerald Case Manager Children's Defense Fund – Southern Regional Office Jackson, MS
	Connecting the Pieces, Examining Issues Surrounding Youth Transitioning Out of Systems of Care
Speakers	Ashley Jackson Director of Social Marketing Mississippi Transitional Outreach Project Jackson, MS
	Cassio Batteast Founder, Fathers Active In Their Hoods (F.A.I.T.H.) Jackson, MS
(Diversity)	Shelley Johnson Founder and Executive Director Rise Above for Youth Executive Director of Partners to End Homelessness Jackson, MS
Remarks	Terry Morris, PhD , Former Foster Child and Manager for Integrated Hazard Analysis
Closing Remarks	Gwendolyn Spencer Prater, Ph.D.
	6:30 p.m. - 7:30 p.m.
Entertainment	Sound Checks

**TENTH ANNUAL
MISSISSIPPI CHILD WELFARE INSTITUTE CONFERENCE**

***“Building Bridges for a New Decade of Transformational Services with
Children and Families”***

Thursday, January 26, 2012

Conference Registration

7:00 a.m. - 5:30 p.m.

Exhibits

8:00 a.m. - 5:30 p.m.

OPENING PLENARY SESSION

Location: Windsor III, IV & V

8:30 a.m. - 9:45 a.m.

Presider

Susie A. Spence, PhD
Interim Associate Dean and Professor
Director, Ph.D. Program
School of Social Work
College of Public Service
Jackson State University

Greetings

Mario Azevedo, PhD
Interim Dean
College of Public Service
Jackson State University

Sean Perkins
Chief of Staff
Mayor's Office
City of Jackson

Introduction of Guest Speaker

Gwendolyn Spencer Prater, PhD
Dean Emerita and Consultant
School of Social Work
College of Public Service
Jackson State University

The Desire to be Healed and Whole

Speaker

Terry Morris, PhD
Manager for Integrated Hazard Analysis
Safety-Critical Avionics Systems Branch
National Aeronautics and Space Administration (NASA)
Langley Research Center
Hampton, VA

Remarks

Susie A. Spence, PhD

Presentation

Gwendolyn Spencer Prater, PhD

**TENTH ANNUAL
MISSISSIPPI CHILD WELFARE INSTITUTE CONFERENCE**

***“Building Bridges for a New Decade of Transformational Services with
Children and Families”***

Thursday, January 26, 2012

9:45 a.m. – 10:00 a.m.

BREAK

10:00 a.m. – 11:30 a.m.

CONCURRENT SESSIONS

Session I **Strengthening Collaboration in Child Welfare**

Room: Churchill I

Collaboration within and across systems is critical to supporting children and families involved in or at high risk for involvement in the child welfare system. The presenter discusses a conceptual framework for building and strengthening collaboration around family issues.

*Presenter: Daryl Chansuthus, MSSW, MA, LAPSW
Clinical Assistant Professor
Department of Social Work
Middle Tennessee State University
Murfreesboro, TN*

**Investing in Our Children: A Community Model for Financing the Delivery of
Transformational Services for Children**

The economy has forced communities to look for alternative approaches to financing services for children and families. The presenters will discuss their findings from two case studies. Participants will be able to identify financing models, special taxing districts, and community examples.

*Presenters: Tisa McGhee, PhD
Assistant Professor
School of Social Work
Barry University
Miami Shores, FL*

*Walter Pierce, PhD
Associate Professor
School of Social Work
Barry University*

*Moderator: Angela Lambert
Master of Social Work Student
Jackson State University*

**TENTH ANNUAL
MISSISSIPPI CHILD WELFARE INSTITUTE CONFERENCE**

***“Building Bridges for a New Decade of Transformational Services with
Children and Families”***

Thursday, January 26, 2012

10:00 a.m. – 11:30 a.m.

CONCURRENT SESSIONS

Session II Reducing the Length of Foster Care

Room: Newbury

The presenter will discuss methods of working with birth parents, foster parents and children. Strategies for dealing with older children who have the potential for adoption will also be discussed.

*Presenter: Leon Chestang, PhD
Visiting Professor
School of Social Work
Jackson State University*

*Moderator: Mario Johnson
Director Independent Living, Resource Unit
Division of Family and Children's Services
Mississippi Department of Human Services*

**Session III Does One Size Fit All? Ethical Issues of Dual Relationships When Working with Children
Ethics**

Room: Winston Ballroom

The presenter will challenge participants to identify ways in which ethical standards can and should apply more fairly to minors. The presenter will also discuss how ideals should be translated into action in social work practice with children and youth.

*Presenter: Vincent Venturini, PhD, LCSW
Associate Professor and Chair
Department of Social Work
Mississippi Valley State University
Itta Bena, MS*

*Moderator: Marstonya Butler
Master of Social Work Student
Jackson State University*

**TENTH ANNUAL
MISSISSIPPI CHILD WELFARE INSTITUTE CONFERENCE**

***“Building Bridges for a New Decade of Transformational Services with
Children and Families”***

Thursday, January 26, 2012

10:00 a.m. – 11:30 a.m.

CONCURRENT SESSIONS

Session IV Challenges African American Female Adolescents and Young Adults Face: Contributing Factors for HIV Infections in Mississippi

Diversity *Room: Churchill II*

The presenter will discuss findings from focus groups which revealed implementing the Sisters Informing, Healing, Living, and Empowering (SIHLE) intervention provides HIV education in a safe environment and allows the adolescents to express themselves openly with their peers.

*Presenter: Shameka Hamlin-Palmer, MPH
Project Coordinator, Best Friends Forever Project
Center for Community Based HIV Prevention
My Brother's Keeper
Jackson, MS*

Utilizing Peer Mentoring to Provide Effective HIV Prevention and Self-Efficacy Among Young African American Men Who Have Sex with Men (YAAMSM)

Documented risk behaviors associated with YAAMSM include both social and emotional isolation from family and community networks coupled with experiences of racism and difficulty embracing sexual identity. The presenter will discuss high-risk sexual behaviors and HIV infection among YAAMSM and provide information on the role of social and community networks.

*Presenter: Joseph Lindsey, MS
Program Coordinator, Community Reach Project
Center for Community Based HIV Prevention
My Brother's Keeper*

*Moderator: Samone Harris
Bachelor of Social Work Student
Jackson State University*

**TENTH ANNUAL
MISSISSIPPI CHILD WELFARE INSTITUTE CONFERENCE**

***“Building Bridges for a New Decade of Transformational Services with
Children and Families”***

Thursday, January 26, 2012

10:00 a.m. – 11:30 a.m.

CONCURRENT SESSIONS

Session V Fetal Alcohol Spectrum Disorders (FASD): Competency-Based Curriculum Development

Room: Surrey Ballroom

This workshop is designed to educate and train participants about FASD and to identify and establish opportunities and procedures for screening women of child-bearing age for alcohol use.

*Presenters: Valerie McDuffie, PhD, MSW
Assistant Professor
Department of Social Work Undergraduate Program
Alabama A & M University
Normal, AL*

*JoAnne McLinn, ACSW, LCSW
Assistant Professor/Field Coordinator
Alabama A & M University*

*Rachael Robinson, PhD, LCSW
Assistant Professor
Alabama A & M University*

*Moderator: Albert Smith
Bachelor of Social Work Student
Jackson State University*

**TENTH ANNUAL
MISSISSIPPI CHILD WELFARE INSTITUTE CONFERENCE**

***“Building Bridges for a New Decade of Transformational Services with
Children and Families”***

Thursday, January 26, 2012

10:00 a.m. – 11:30 a.m.

CONCURRENT SESSIONS

Session VI **Healthy Social Workers: Taking Care of Ourselves to Provide Best and Promising Services to Children and Families**

Room: Canterbury

This workshop will focus on preserving and enhancing the health and well-being of social workers so that they can provide best and promising services to their clients. Specific examples of techniques for nutrition, exercise, and relaxation for self-care are shared. Participant interaction is encouraged.

Presenters: *Noel Didla, M.A.*
 English Instructor
 Jackson State University

Abigail Parry Phillips, B.A.
Nutrition Teacher
Jackson Public Schools
Yoga Instructor - Walter Payton Fitness Center
Jackson State University

Quanikki A. Martin, M.S.
Assistant Director
Fitness and Wellness
Walter Payton Health and Wellness Center

Moderator: *Samantha Graham*
 Master of Social Work Student
 Jackson State University

11:30 a.m. – 1:00 p.m.

LUNCH (on your own)

1:00 p.m. – 2:00 p.m.

CONCURRENT SESSIONS

**TENTH ANNUAL
MISSISSIPPI CHILD WELFARE INSTITUTE CONFERENCE**

***“Building Bridges for a New Decade of Transformational Services with
Children and Families”***

Thursday, January 26, 2012

1:00 p.m. – 2:00 p.m.

CONCURRENT SESSIONS

**Session VII Preparing Culturally Competent Child Welfare Workers
Diversity**

Room: Winston Ballroom

Child welfare social workers must be willing to challenge traditional practice in order to explore contextual meaning with clients. This training framework is explained and illustrated using creative approaches for teaching cultural competence to social workers in child welfare practice.

*Presenter: Steven Granich, DSW, LCSW, LMFT
Assistant Professor
Department of Sociology, Anthropology and Social Work
Lock Haven University of Pennsylvania
Lock Haven, PA*

*Moderator: Marlana Lebew
Master of Social Work Student
Jackson State University*

Session VIII Dismantling the Cradle to Prison Pipeline in Mississippi

Room: Churchill II

The presenter will discuss the Children’s Defense Fund’s Cradle to Prison Pipeline Campaign, a national and community crusade that engages families, youth, communities, and policy makers in the development of healthy, safe and educated children.

*Presenter: Layla Fitzgerald
Case Manager
Children’s Defense Fund – Southern Regional Office
Jackson, MS*

*Moderator: Terria Brooks-Green
Bachelor of Social Work Student
Jackson State University*

**TENTH ANNUAL
MISSISSIPPI CHILD WELFARE INSTITUTE CONFERENCE**

***“Building Bridges for a New Decade of Transformational Services with
Children and Families”***

Thursday, January 26, 2012

1:00 p.m. – 2:00 p.m.

CONCURRENT SESSIONS

Session IX **Towards a General Systems Theory of Public Health Education and Promotion: Best Practices When Working with Children and Adolescents**

Room: Newbury

The presenter will discuss some of the ways the principles of General Systems Theory (a cross-disciplinary theoretical approach to analyzing and synthesizing the ways complex systems function) can be applied in health education and health promotion in child and adolescent populations.

*Presenter: David Brown, EdD, MA, MCHES
Assistant Professor
Department of Behavioral and Environmental Health
School of Health Sciences
Jackson State University*

*Moderator: Alisha Thigpen
Bachelor of Social Work Student
Jackson State University*

Session X **Is there a Pink Elephant in the Agency?**

Room: Surrey Ballroom

This presentation will be didactic and experiential. Participants will have awareness of inclusion, transparency, and empowerment in the process of change related to child welfare practice. Participants will also be able to identify phases of the change process and understand how to incorporate this content into practice.

*Presenter: Monique Busch, PhD, ACSW, LCSW
Assistant Professor, Social Work
Delta State University
President, Performance Solutions Unlimited, LLC
Cleveland, MS*

*Moderator: Pamela Scott
Social Work Doctoral Student
Jackson State University*

**TENTH ANNUAL
MISSISSIPPI CHILD WELFARE INSTITUTE CONFERENCE**

***“Building Bridges for a New Decade of Transformational Services with
Children and Families”***

Thursday, January 26, 2012

1:00 p.m. – 2:00 p.m.

CONCURRENT SESSIONS

Session XI **Recruitment and Retention of Resource Families: Updating the Paradigm**

Room: Churchill I

The presenter will provide a historical as well as a theoretical perspective of recruitment and retention efforts in Michigan. Participants will receive information on the values of research and data in program development and the value of integrating and refining strategies versus creating new ones.

*Presenter: Addie Williams, LMSW, JD
President/CEO
Spaulding for Children
Southfield, MI*

*Moderator: Eva Bowie Ellis
Social Work Consultant
Jackson, MS*

2:05 p.m. – 3:05 p.m.

CONCURRENT SESSIONS

Session XII **Contemporary Issues in Child Welfare: The African American Historical Perspective**

Room: Winston Ballroom

The presenter will discuss the rich legacy of African American literature to complement historical documentation regarding child welfare issues.

*Presenters: Anthony Hill, PhD, LICSW, ACSW
Assistant Clinical Professor
National Catholic School of Social Service
The Catholic University of America
Washington, DC*

*Laura Daugherty, PhD, MSW, LICSW
Associate Professor
National Catholic School of Social Service
The Catholic University of America*

*Moderator: Lyinka Boston
Master of Social Work Student
Jackson State University*

**TENTH ANNUAL
MISSISSIPPI CHILD WELFARE INSTITUTE CONFERENCE**

***“Building Bridges for a New Decade of Transformational Services with
Children and Families”***

Thursday, January 26, 2012

2:05 p.m. – 3:05 p.m.

CONCURRENT SESSIONS

Session XIII Factors Influencing the Lives of Children and Kinship Caregivers of Children Whose Parents Are Incarcerated

Room: Churchill II

The presenters examine some of the psychological factors and the impacts they have on the children of incarcerated parents. The presentation also focuses on challenges and adversities kinship caregivers encounter.

*Presenters: Patricia Wilkerson, PhD, LCSW
Assistant Professor
School of Social Work
Jackson State University*

*Candace Carter, MPH
Social Work Doctoral Student
Jackson State University*

*Moderator: Cassedra Booker
Bachelor of Social Work Student
Jackson State University*

**Session XIV Foster Parent Training: Ensuring Readiness, Sustainability, and Cultural Competence
Diversity**

Room: Surrey Ballroom

This interactive session will focus on innovative and evidence-based approaches to foster parent training. Participants will learn techniques designed for promotion of best practices in foster parent training.

*Presenter: Rowena Wilson, DSW
Associate Dean and Professor
Director, PhD Program
School of Social Work
Norfolk State University
Norfolk, VA*

*Moderator: Eva Bowie Ellis
Social Work Consultant
Jackson, MS*

**TENTH ANNUAL
MISSISSIPPI CHILD WELFARE INSTITUTE CONFERENCE**

***“Building Bridges for a New Decade of Transformational Services with
Children and Families”***

Thursday, January 26, 2012

2:05 p.m. – 3:05 p.m.

CONCURRENT SESSIONS

Session XV Identifying and Reporting Child Maltreatment: Physical and Behavioral Indicators, Perpetrator Characteristics, and the Reporting Process

Room: Newbury

Child maltreatment continues to be a prevalent problem in our society. The presenter provides information on the various physical and behavioral indicators a maltreated child may exhibit, perpetrator characteristics, and the process to file a report with the Department of Human Services.

*Presenter: Shannon Toth
State Coordinator - South, Comprehensive Family Support Services Program
Mississippi Department of Human Services
Division of Family and Children's Services – Prevention Unit
Jackson, MS*

*Moderator: Shameika McDonald
Bachelor of Social Work Student
Jackson State University*

Session XVI Persistence and Motivation: Can We Systematically Enhance the College Experience for Students Formerly in Foster Care Toward Success?

Room: Churchill I

Little is known about youth in foster care who pursue higher education. The presenters discuss findings from a study of youth who are aging out of the foster care system.

*Presenters: Belinda Smith, PhD
Principal Investigator and Assistant Professor
School of Social Work
Morgan State University
Baltimore, MD*

*Dana Burdnell Wilson, MSW
Co-Principal Investigator and Director
Student Affairs and Admissions
Morgan State University*

*Moderator: Elleeanna Perry Lawson
Master of Social Work Student
Jackson State University*

**TENTH ANNUAL
MISSISSIPPI CHILD WELFARE INSTITUTE CONFERENCE**

***“Building Bridges for a New Decade of Transformational Services with
Children and Families”***

3:05 p.m. – 3:20 p.m.

BREAK

3:20 p.m. – 4:20 p.m.

CONCURRENT SESSIONS

Session XVII Parenting in the 21st Century: Issues Confronting the Welfare of Children in Rural Areas

Room: Churchill I

Social workers must ration scarce funds and resources to provide services for children in rural areas. The presenter will discuss challenges of parenting and offer suggestions for social work intervention not only on individual and family levels but from a macro system perspective.

*Presenter: Harriett Ivory Means, PhD, MSW, LCSW
Associate Professor
Social Work Department
Troy University
Troy, AL*

*Moderator: Annie Ward
Master of Social Work Student
Jackson State University*

**Session XVIII A Cross-Cultural Comparative Analysis of Major Social Welfare Policies and Services for
Children in Ghana and the United States**

Diversity

Room: Churchill II

The presenters will identify and compare major social welfare policies and services addressing child welfare policies and family issues in Ghana and the United States. Participants' knowledge of the gaps in services between the two countries will also be discussed to increase advocacy.

*Presenters: Rejoice Addae, PhD
Assistant Professor
Department of Social Work
Alcorn State University
Alcorn State, MS*

*Dorothy Idleburg, PhD
Professor and Director
Department of Social Work
Alcorn State University*

*Moderator: Tara Young
Master of Social Work Student
Jackson State University*

**TENTH ANNUAL
MISSISSIPPI CHILD WELFARE INSTITUTE CONFERENCE**

***“Building Bridges for a New Decade of Transformational Services with
Children and Families”***

3:20 p.m. – 4:20 p.m.

CONCURRENT SESSIONS

Session XIX Faith in Action

Room: Surrey Ballroom

Far too many children grow up without the love and support of their father. This presentation focuses on offering practitioners strategies to provide support and services that are viewed as father and family friendly.

*Presenter: Cassio Batteast
 Founder/Fathers Active in their Hoods (FAITH)
 Tougaloo, MS
 Student, Department of Urban and Regional Planning
 School of Policy and Planning
 Jackson State University*

*Moderator: Jamela McInnis
 Master of Social Work Student
 Jackson State University*

**Session XX Transformational Services: An Ethical Framework of Practice for Children and Families
Ethics**

Room: Winston Ballroom

The presenters will identify ethical issues and discuss an ethical framework of transformational service interventions for children and families.

*Presenters: Adriane Dorsey-Kidd, MSW, LCSW
 Southern Mental Health Advocacy, Research, and Training Institute
 School of Social Work
 Jackson State University*

*Theresia Johnson-Ratliff, PhD, LCSW
Director of Field Education and Assistant Clinical Professor
School of Social Work
Jackson State University*

*Moderator: Sirrenthia Johnson
 Bachelor of Social Work Student
 Jackson State University*

**TENTH ANNUAL
MISSISSIPPI CHILD WELFARE INSTITUTE CONFERENCE**

***“Building Bridges for a New Decade of Transformational Services with
Children and Families”***

3:20 p.m. – 4:20 p.m.

CONCURRENT SESSIONS

Session XXI **Family and Victim Advocates in Child Advocacy Centers**

Room: Newbury

The presenters discuss their findings of a study on individuals who serve as family and victim advocates in child advocacy centers. In particular, they analyzed their qualifications and responsibilities when serving physically or sexually abused clients.

*Presenter: Teresa Young, MSW, LCSW, PIP
 PhD Student
 School of Social Work
 University of Alabama
 Tuscaloosa, AL*

*Debra Nelson-Gardell, PhD, LCSW
Associate Professor
School of Social Work
University of Alabama - Tuscaloosa*

*Moderator: Jessica Green
 Master of Social Work Student
 Jackson State University*

Session XXII **The Role of Human Resources Relative to the Recruitment and Retention of Child Welfare Workers**

Room: Canterbury

Positive outcomes for vulnerable children, youth and families are most likely to occur when there is enough staff adequately prepared and trained to deliver services. The presenter will discuss concepts agencies are employing to retain a highly competent workforce.

*Presenter: Ester Stokes, PhD
 Visiting Assistant Professor
 Public Policy and Administration
 School of Policy and Planning
 Jackson State University*

*Moderator: April Douglas
 Master of Social Work Student
 Jackson State University*

4:30 p.m. – 5:30 p.m.

PLENARY SESSION

Location: Windsor III, IV & V

**TENTH ANNUAL
MISSISSIPPI CHILD WELFARE INSTITUTE CONFERENCE**

***“Building Bridges for a New Decade of Transformational Services with
Children and Families”***

Thursday, January 26, 2012

PLENARY SESSION

4:30 p.m. – 5:30 p.m.

Location: Windsor III, IV & V

Presider

Jessie Chiplin Wright, LPC
Private Practitioner
Jackson, MS

Introduction of Speaker

Susie A. Spence, PhD
Interim Associate Dean
School of Social Work
Jackson State University

The Truth in Healing

Speaker

Juli Alvarado, LPC, MA, NCC
President, Coaching for Life, LLC
Motivational Speaker
Arvada, CO

Remarks

Jessie Chiplin Wright, LPC

**TENTH ANNUAL
MISSISSIPPI CHILD WELFARE INSTITUTE CONFERENCE**

***“Building Bridges for a New Decade of Transformational Services with
Children and Families”***

Thursday, January 26, 2012

Field Education Symposium

1:00 p.m. – 2:00 p.m. Ethical Considerations in Clinical Supervision (Part I)

Room: Canterbury

Clinical supervision is a complex process. The presenter will discuss the dimensions from an ethical view. Further elaboration on the balancing act of the supervisor as he/she assists the supervisees in understanding their emotions, intellect, skills, and intuition as they relate to the client system will also be discussed.

*Presenter: Mary Nelums, PhD, LCSW
 Social Work Consultant
 Jackson, MS*

*Moderator: Regina Curry, MSW, LMSW
 Mitigation Specialist
 Office of State Public Defender- Capital Defense Counsel
 Jackson, MS*

2:05 p.m. – 3:05 p.m. Ethical Considerations in Clinical Supervision (Part II)

Room: Canterbury

This workshop is a continuation of Part I. The presenter will discuss the dimensions of clinical supervision from an ethical view. Further elaboration on the balancing act of the supervisor as he/she assists the supervisees in understanding their emotions, intellect, skills, and intuition as they relate to the client system will also be discussed.

3:05 p.m. – 3:20 p.m. BREAK

3:20 p.m. – 4:20 p.m. CONCURRENT WORKSHOPS

4:30 p.m. – 5:30 p.m. PLENARY Location: Windsor III, IV & V

The Truth in Healing

Speaker **Juli Alvarado, LPC, MA, NCC**
 President, Coaching for Life, LLC
 Motivational Speaker
 Arvada, CO

**TENTH ANNUAL
MISSISSIPPI CHILD WELFARE INSTITUTE CONFERENCE**

*“Building Bridges for a New Decade of Transformational Services with
Children and Families”*

Thursday, January 26, 2012

Tenth Year Anniversary Celebration Program

6:15 p.m.
Marriott Hotel
Windsor Rooms

Dr. Gwendolyn Spencer Prater, Presiding

Welcome	Ms. Velma Hankins
History	Dr. Gwendolyn S. Prater
Recognition of Special Guests	Dr. Theresia Johnson-Ratliff
Invocation	Mrs. Tasha Smith
Toast to the Next Decade of Providing Best Services for Children and Families	Provost Mark Hardy
Remarks	Dr. Susie Spence Dr. Mario Azevedo

Refreshments
and
Dancing

Entertainment Provided by:
Andy Hardwick & Friends
Russell Thomas, Saxaphonist
and
Henry Rhodes

**TENTH ANNUAL
MISSISSIPPI CHILD WELFARE INSTITUTE CONFERENCE**

***“Building Bridges for a New Decade of Transformational Services with
Children and Families”***

Friday, January 27, 2012

MORNING COFFEE NETWORKING SESSION

*Roundtable networking session for current and aspiring managers in child welfare, mental health, health,
and other human service agencies, and organizations*

Sponsored by Network for Social Work Managers

7:30 a.m. – 8:10 a.m.

Location: Warwick Room

PLENARY SESSION

8:20 a.m. – 9:15 a.m.

Location: Windsor III, IV & V

Introduction of Guest Speaker

Gwendolyn Spencer Prater, PhD
Dean Emerita and Consultant
School of Social Work
College of Public Service
Jackson State University

**Health Care Reform: Implications for Children
and Families**

Speaker

Anton Gunn, MSW
Regional Director, Region IV
Office of the Secretary
U.S. Department of Health and Human Services
Atlanta, GA

Remarks

Gwendolyn Spencer Prater, PhD

**TENTH ANNUAL
MISSISSIPPI CHILD WELFARE INSTITUTE CONFERENCE**

***“Building Bridges for a New Decade of Transformational Services with
Children and Families”***

Friday, January 27, 2012

9:20 a.m. – 10:20 a.m.

CONCURRENT SESSIONS

Session XXIII The Role of Multiple Parenting as a Model for Teenage Pregnancy Prevention

Room: Churchill II

A method to use to get teenagers to think about the consequences of sex is to focus on how the structure of the family is affected by multiple parenting, which is the result of partners having children with each other and with other partners. The presenter will discuss implications of the complexity of family structure that will broaden teenage parenting issues.

*Presenter: Johnnie Mae Griffin, PhD
Assistant Professor
Department of Sociology
Jackson State University*

*Moderator: April Armstrong
Social Work Doctoral Program
Jackson State University*

**Session XXIV Cultural Competency: What You Need to Know
Diversity**

Room: Winston Ballroom

The presenter offers a snapshot of cultural competence from a practitioner’s standpoint and encourages personal responsibility in dealing with human differences. The Culturally and Linguistically Appropriate Services (CLAS) standards will also be explored. The presenter will discuss successful/unsuccessful practices in the delivery of culturally competent care.

*Presenter: Albertstein Johnson-Pickett
Division Director II/Cultural and Linguistic Competence Coordinator
Mississippi Department of Mental Health
Jackson, MS*

*Alandre Jones
NFusion 7 Youth and
President of Cultural and Linguistic Competence Subcommittee
Mississippi Department of Mental Health*

*Moderator: Lisa Moffett
Social Work Doctoral Student
Jackson State University*

**TENTH ANNUAL
MISSISSIPPI CHILD WELFARE INSTITUTE CONFERENCE**

***“Building Bridges for a New Decade of Transformational Services with
Children and Families”***

Friday, January 27, 2012

9:20 a.m. – 10:20 a.m.

CONCURRENT SESSIONS

Session XXV **Knowledge, Attitudes, and Beliefs of Fetal Alcohol Spectrum Disorders (FASD) in Mississippi**

Room: Surrey Ballroom

The presenters discuss findings of a FASD survey that was administered to assess participants' knowledge, to promote awareness and to educate them on the effects of alcohol on the fetus during pregnancy.

*Presenters: Beryl Polk, PhD, LSW, CPM
 Director, Genetic Services
 Mississippi State Department of Health
 Jackson, MS*

*Patricia Terry, MS, LSW
Branch Director/Genetic Services
Mississippi State Department of Health*

*Moderator: Larry McCook
 Master of Social Work Student
 Jackson State University*

**TENTH ANNUAL
MISSISSIPPI CHILD WELFARE INSTITUTE CONFERENCE**

***“Building Bridges for a New Decade of Transformational Services with
Children and Families”***

Friday, January 27, 2012

9:20 a.m. - 10:20 a.m.

CONCURRENT SESSIONS

Session XXVI **Social Work and the Civil Rights Movement in Mississippi: Confronting Apartheid and Collusion in Mississippi’s Child Welfare System**

Room: Churchill I

History has always been a part of informing the present. This presentation explores the activities of social workers during the Civil Rights Movement of the 1960s and 1970s. The records of the Sovereignty Commissions were examined to identify the activities of professional social workers.

*Presenters: Herbert Burson, PhD
Assistant Professor and Interim Program Coordinator
Master of Social Work Program
Jackson State University*

*Pamela Scott, LMSW
Social Work Doctoral Student
Jackson State University*

*Moderator: Donald Clausen
Social Work Doctoral Student
Jackson State University*

**TENTH ANNUAL
MISSISSIPPI CHILD WELFARE INSTITUTE CONFERENCE**

***“Building Bridges for a New Decade of Transformational Services with
Children and Families”***

Friday, January 27, 2012

9:20 a.m. - 10:20 a.m.

CONCURRENT SESSIONS

Session XXVII Grief and Foster Parents: How do Foster Parents Feel when a Foster Child Leaves Their Home?

Room: Newbury

The presenters discuss their findings of a study that examined the grief foster parents experience when a child is removed from their care.

*Presenters: Corie Hebert, PhD, LMSW
Assistant Professor
Department of Counseling and Human Development
Southeastern Louisiana University
Hammond, LA*

*Heidi Kulkin, PhD, LCSW
Social Work Program Coordinator and Associate Professor
Department of Counseling and Human Development
Southeastern Louisiana University*

*Moderator: Candace Carter
Social Work Doctoral Student
Jackson State University*

**TENTH ANNUAL
MISSISSIPPI CHILD WELFARE INSTITUTE CONFERENCE**

***“Building Bridges for a New Decade of Transformational Services with
Children and Families”***

Friday, January 27, 2012

9:20 a.m. - 10:20 a.m.

CONCURRENT SESSIONS

**Session XXVIII China’s One Child Per Family Policy
Diversity**

Room: Canterbury

The presenters will discuss China’s one child per family policy and its impact on services to families and children. Photos and short video clips taken by the presenters on their recent visit to China, along with reports from the literature, are presented and discussed. Implications for services to families and children in the United States are identified.

*Presenters: Phyllis Hammond, PhD, LCSW
Clinical Assistant Professor
School of Social Work
Jackson State University*

*Marlena Lebew
Master of Social Work Student
Jackson State University*

*Heather Wilcox, MA
Research Fellow
Human Capital Development Division
Jackson State University*

*Moderator: Roshelle Halcomb
Master of Social Work Student
Jackson State University*

**TENTH ANNUAL
MISSISSIPPI CHILD WELFARE INSTITUTE CONFERENCE**

***“Building Bridges for a New Decade of Transformational Services with
Children and Families”***

Friday, January 27, 2012

10:25 a.m. – 10:40 a.m.

BREAK

10:45 a.m. – 12:00 p.m.

CONCURRENT SESSIONS

Session XXIX **From Chaos to Calm**

Room: Churchill I

This workshop will emphasize the mind/body connection and provide a better understanding of the early experiences that have shaped who we have become. Participants will explore the behavioral, emotional, social, cognitive, and physiologic functioning of themselves and their clients. Neuroscientific research findings with ancient paradigms in healing, even for severe behaviors resulting from trauma, will be discussed along with other practice techniques.

*Presenter: Juli Alvarado
 President, Coaching for Life, LLC
 Motivational Speaker
 Arvada, CO*

*Moderator: Rosie Thomas
 Social Work Doctoral Student
 Jackson State University*

Session XXX **A Family-Inclusive Strategy for Improving Communication Skills in School-Aged Students
with Mild-to-Moderate Autism Spectrum Disorder (ASD)**

Room: Churchill II

This presentation will provide an overview of an intervention strategy designed to improve the cognitive/linguistic/behavioral and social skills of elementary aged children who have been diagnosed with mild-to-moderate ASD.

*Presenters: Mary Langford-Hall, PhD, CCC-SLP
 Assistant Professor
 Department of Communicative Disorders
 Jackson State University*

*Betty Sutton, EdD, CCC-SLP
Retired Faculty
Jackson, MS*

*Moderator: Olevia Billips-Partlow
 Social Work Doctoral Student
 Jackson State University*

**TENTH ANNUAL
MISSISSIPPI CHILD WELFARE INSTITUTE CONFERENCE**

***“Building Bridges for a New Decade of Transformational Services with
Children and Families”***

Friday, January 27, 2012

10:45 a.m. – 12:00 p.m.

CONCURRENT SESSIONS

Session XXXI Secondary Trauma: Supporting Child Welfare Professionals

Room: Newbury

Through discussion and experiential exercises, participants will learn a variety of strategies for dealing with stress. Managers will learn strategies for reducing the impact on worker performance and tools to improve retention.

*Presenters: Sharon McKinley, MSW
Program Manager
Child Welfare Information Gateway
Fairfax, VA*

*Cynthia Peterson, MSW
Program Manager
Child Welfare Information Gateway*

*Moderator: Tasha Smith, MA
Division Director II, Prevention Unit
Division of Family and Children's Services
Mississippi Department of Human Services
Jackson, MS*

**Session XXXII Ethical Decisions in Technology for Modern Social Workers
Ethics**

Room: Winston Ballroom

This presentation will include a review of the National Association of Social Workers Code of Ethics on Confidentiality and Privacy, identify six technology methods used by social workers in child welfare practice, and recognize ten strengths and barriers to using technological interventions.

*Presenter: Danielle Seale, LCSW
Director, Social Services
Mississippi State Department of Health
Jackson, MS*

*Moderator: Tabitha Brookins
Social Work Doctoral Student
Jackson State University*

**TENTH ANNUAL
MISSISSIPPI CHILD WELFARE INSTITUTE CONFERENCE**

***“Building Bridges for a New Decade of Transformational Services with
Children and Families”***

Friday, January 27, 2012

10:45 a.m. – 12:00 p.m.

CONCURRENT SESSIONS

**Session XXXIII The Status of Children of Color in Mississippi
Diversity**

Room: Surrey Ballroom

The presenters will provide an assessment of the status of children of color in Mississippi and discuss the most urgent issues facing these families regarding access to healthcare, the state of mental health services for children, and barriers to quality education.

*Presenters: Olga Osby, DSW
Associate Professor
School of Social Work
Jackson State University*

*Anna Marshall, PhD, LCSW
Assistant Professor
School of Social Work
Jackson State University*

*Trenia Allen, MSW, LCSW
Visiting Assistant Professor
School of Social Work
Jackson State University*

*Moderator: Safiya Omari, PhD
Associate Professor and Director
Southern Institute for Mental Health, Advocacy,
Research, and Training (SMHART)
School of Social Work
Jackson State University*

**TENTH ANNUAL
MISSISSIPPI CHILD WELFARE INSTITUTE CONFERENCE**

***“Building Bridges for a New Decade of Transformational Services with
Children and Families”***

Friday, January 27, 2012

10:45 a.m. – 12:00 p.m.

CONCURRENT SESSIONS

Session XXXIV Religious Expressions and the Public School System: Implications for Child Welfare

Room: Canterbury

This presenter will discuss differences between religious expressions and gang related symbols and the increase in disciplinary problems in public schools. Implications for child welfare will also be discussed.

*Presenter: Bernice McKenny, LMSW
Consultant
Emmanuel Social Services
Jackson, MS*

*Moderator: Velma Hankins
Social Work Consultant
Jackson, MS*

The Effect of Stress on Child Welfare Workers

Room: Canterbury

As professionals, we must understand that stress is a process that occurs slowly over time. The presenter will review a history of burnout, characterize warning signs, discuss possible ways to help resolve the problem, and make recommendations regarding future research.

*Presenter: Montoreau Jones-Hutton
Master of Social Work Student
Jackson State University*

*Moderator: Velma Hankins
Social Work Consultant
Jackson, MS*

**TENTH ANNUAL
MISSISSIPPI CHILD WELFARE INSTITUTE CONFERENCE**

***“Building Bridges for a New Decade of Transformational Services with
Children and Families”***

Friday, January 27, 2012

CLOSING LUNCHEON

Location: Windsor I & II

12:15 p.m. – 1:45 p.m.

Presider	Theresa Johnson-Ratliff , PhD, LCSW Director of Field Education School of Social Work Jackson State University
Greetings	Dr. Mark G. Hardy Provost and Vice President for Academic Affairs Jackson State University
Invocation	Elder Tyron G. Hanks, Sr. Pastor, Evangelist Temple Church HORFAN Church of God in Christ Jackson, MS
Introduction of Speaker	Gwendolyn Spencer Prater , PhD A New Decade of Transformational Services with Children and Families: Implications for Social Workers
Speaker	Rowena Wilson , DSW Associate Dean, Director Ph.D. Program and Professor School of Social Work Norfolk State University Norfolk, VA
Presentation of Awards	Susie A. Spence , PhD Interim Associate Dean and Ph.D. Director School of Social Work Anna Marshall , PhD Assistant Professor of Social Work Jackson State University
Closing Remarks	Susie A. Spence , PhD Gwendolyn Spencer Prater , PhD

**TENTH ANNUAL
MISSISSIPPI CHILD WELFARE INSTITUTE CONFERENCE**

***“Building Bridges for a New Decade of Transformational Services with
Children and Families”***

Exhibitors

Baptist Children’s Village

**Child Welfare Information Gateway
*A Service of the U.S. Children’s Bureau
Administration on Children and Families (ACF)
Department of Health and Human Services (HHS)***

Hinds Behavioral Health Services

Jackson Medical Mall Foundation

**Jackson State University – College of Public Service
*School of Social Work***

**Mississippi Department of Human Services
*Division of Family and Children’s Services***

Mississippi Children’s Home Services/CARES Center, Inc.

Mississippi Youth Challenge Academy

National Alliance on Mental Illness (NAMI) Mississippi

National Association of Social Workers – Mississippi Chapter

Spaulding for Children

Three Oaks Behavioral Health of Ridgeland, LLC

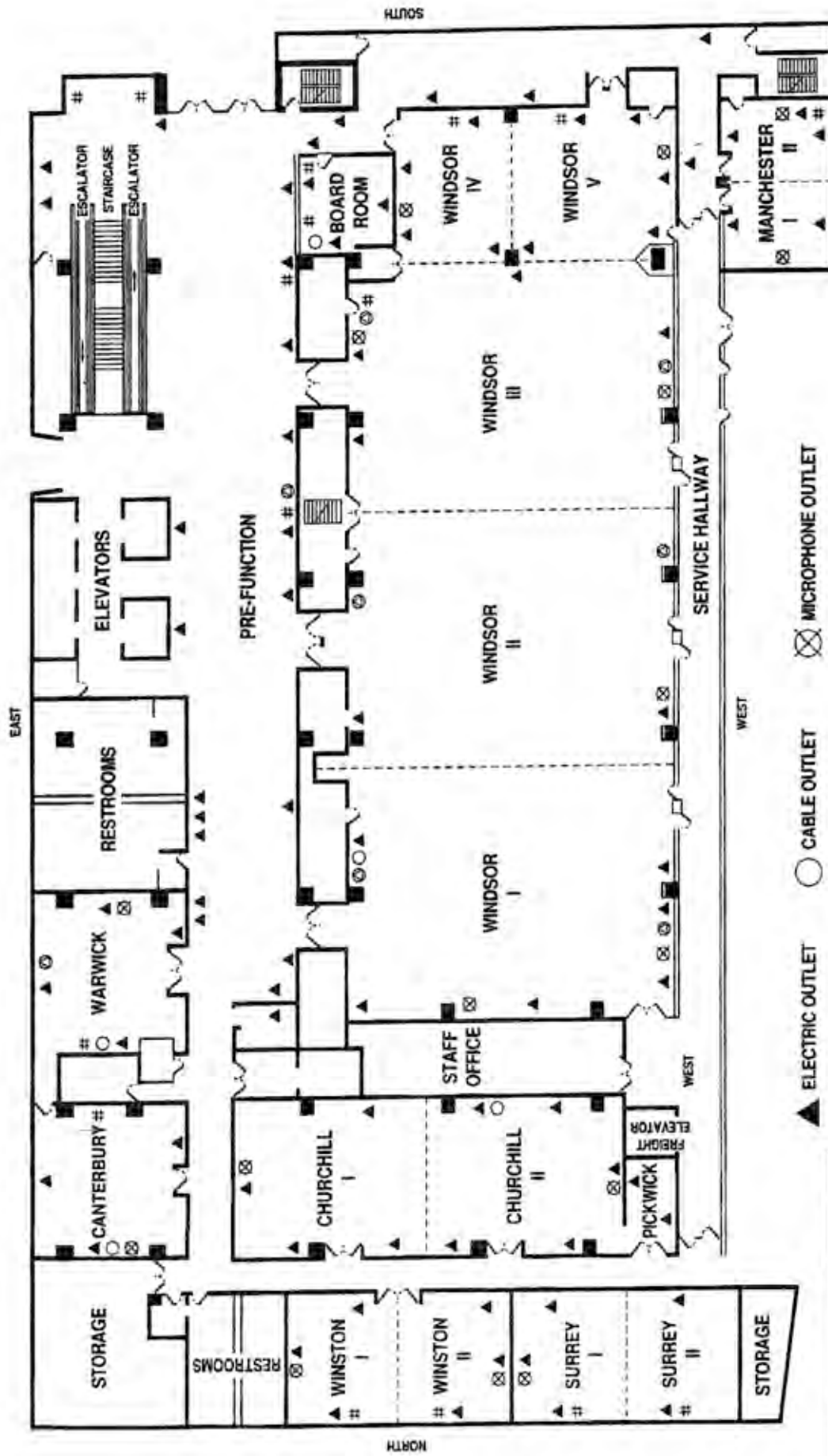
Youth Villages

**TENTH ANNUAL
MISSISSIPPI CHILD WELFARE INSTITUTE CONFERENCE**

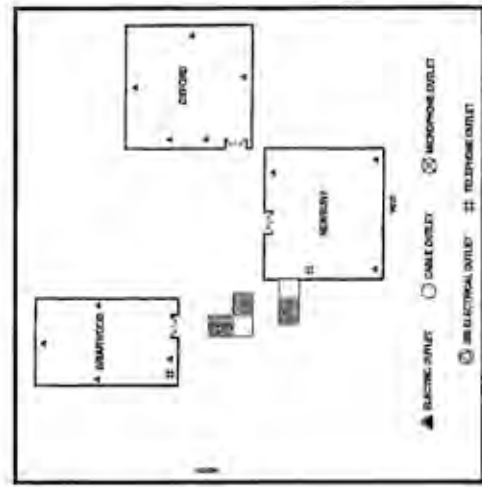
“Building Bridges for a New Decade of Transformational Services with Children and Families”

Program Planning Committee

Dr. Gwendolyn Spencer Prater, Chair – Jackson State University
Dr. Susie A. Spence, Ex-Officio – Jackson State University
Mrs. Shirley Banks – Jackson State University
Dr. Jean Brooks – Jackson State University
Mrs. Eugenia Cook – Jackson State University
Ms. Jean Cook – Jackson State University
Ms. Eva Bowie Ellis – Social Work Consultant
Mrs. Portia Ballard Espy – Children’s Defense Fund
Dr. Phyllis Hammond – Jackson State University
Ms. Velma Hankins – Social Work Consultant
Dr. Eunice Harris, Co-Chair – Jackson State University
Ms. Eunetta Hart – Jackson State University
Mr. Mario Johnson – Mississippi Department of Human Services
Division of Family and Children’s Services
Dr. Anna Marshall – Jackson State University
Mr. Larry McCook, Master of Social Work Student
Ms. Temcula Robinson – Mississippi Department of Human Services
Division of Family and Children’s Services
Dr. Theresia Ratliff, Co-Chair – Jackson State University
Mrs. Betty Reed – Jackson State University
Mrs. Tasha Smith – Mississippi Department of Human Services
Division of Family and Children’s Services
Mrs. Jessie Chiplin Wright – Private Practitioner



- ▲ ELECTRIC OUTLET ○ CABLE OUTLET ⊗ MICROPHONE OUTLET
- ⊕ 208 ELECTRICAL OUTLET # TELEPHONE OUTLET



Marriott®

JACKSON

200 E. Amite Street
 Jackson, MS 39201
 601-969-5100
www.marriott.com/janmc



Congratulations

to the

Mississippi Child Welfare Institute - School of Social Work

on its

TENTH ANNUAL CONFERENCE

“Building Bridges for a New Decade of Transformational Services with Children and Families”

College of Public Service

(601) 979.8836

www.cps.jsums.edu

Dr. Mario J. Azevedo, Interim Dean

Mississippi Child Welfare Institute

(601) 979.1123

www.jsums.edu/mcwi

School of Health Sciences

(601) 979.8806

www.cps.jsums.edu

Communicative Disorders (601) 432.6717 – B.S. and M.S. Degrees

Epidemiology and Biostatistics (601) 979.8789 – M.P.H. & Dr.P.H. Degrees

Health Policy and Management (601) 979.8826 – M.P.H. & Dr.P.H. Degrees
and Health Care Administration – B.S. Degree

Behavioral and Environmental Health (601) 979.1143 – M.P.H. & Dr.P.H. Degrees

School of Policy and Planning

(601) 432.6865

www.cps.jsums.edu

Urban and Regional Planning (601) 432.6865 – M.A. & Ph.D. Degrees

Urban Studies (601) 432.6865 – B.A. Degree

Public Policy & Administration (601) 432.6368 – M.P.P.A. & Ph.D. Degrees

School of Social Work

(601) 432.6828

www.cps.jsums.edu

Social Work (601) 432.6811 – Ph.D. Degree

Social Work (601) 432.6819 – M.S.W. Degree

Social Work (601) 979.2631 – B.S.W. Degree

**MARK YOUR CALENDAR
FOR**



**2013
Mississippi Child
Welfare Institute
Conference**

**MARRIOTT HOTEL
JACKSON, MS**

FEBRUARY 6-8, 2013