



The Department of Urban & Regional Planning @



MISSISSIPPI'S ONLY URBAN PLANNING PROGRAM

Jackson State University | 101 Capitol Street | Downtown Jackson Campus

CONCENTRATIONS:
Community Development and Housing
Environment and Land Use
Urban Design

"Improving the Quality of Life"

Offering....

- *Master of Arts in Urban & Regional Planning (PAB Accredited)*
- *Doctor of Philosophy in Urban & Regional Planning*

Dr. Berneece Herbert, DURP Chair

Berneece.Herbert@jsums.edu



The Department of Urban & Regional Planning @



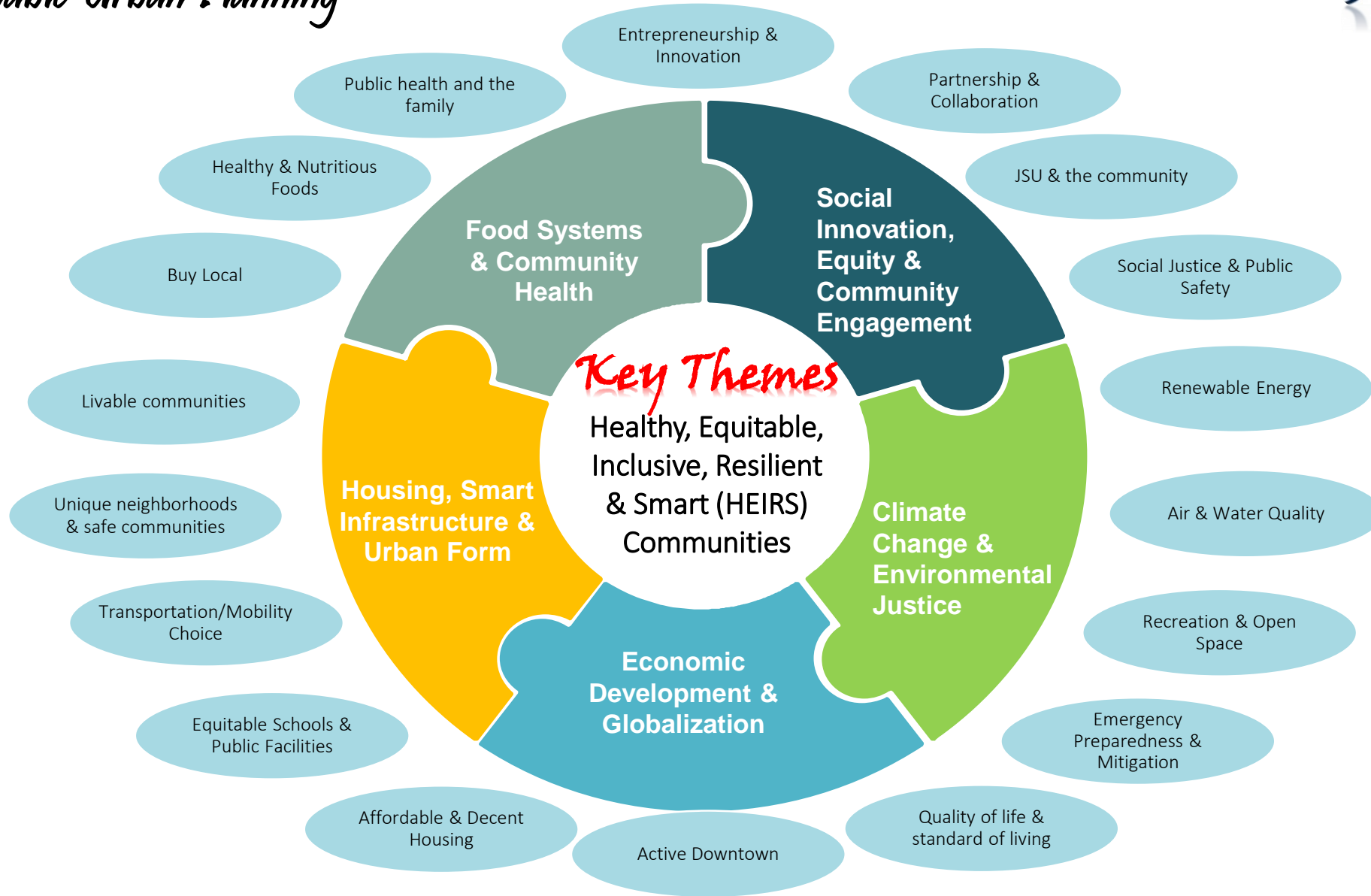
Our role

*Educate & train Planners to shape the future of cities,
regions, infrastructure & services!*

*Provide a student-centered & collegiate environment,
infused with engagement, excitement & empowerment!*



The Department of Urban & Regional Planning – Key Themes for Human-Centered, Sustainable Urban Planning



Faculty & Areas of Expertise/Interest

The Department of Urban & Regional Planning @



Berneece S. Herbert, Ph.D.
Associate Professor & Chair

- Urban Structure & Sustainability
- Food Security & Under-resourced Communities
- Climate Change & Energy Justice



Joan M. Wesley, Ph.D.
Associate Professor

- Community Development & Housing
- Stakeholder Participation & Community Engagement
- Social Equity & Justice



Talya Thomas, Ph.D.
Associate Professor

- Community/Economic Development & Housing
- Environmental & Public Policy
- Food Security



Edmund Merem, Ph.D.
Professor

- Planning Ethics
- Global Cities & International Development
- Climate Change, Environment & Land Use



Mukesh Kumar, Ph.D.
Associate Professor

- Urban Spatial Structure
- Economic Development
- Urban Governance



Moe Chowdhury, Ph.D., AICP
Visiting Assistant Professor

- Urban Studies
- Transportation Planning
- Human Geography

The Department of Urban & Regional Planning @



CORE VALUES



For additional information, please contact:



Ms. Lisa Johnson
Student Development Coordinator

101 W. Capitol Street
Jackson MS 39201

Tel: 601-979-8725

[**lisa.r.johnson@jsums.edu**](mailto:lisa.r.johnson@jsums.edu)

[**www.jsums.edu/planning/**](http://www.jsums.edu/planning/)

Like us on Facebook@

[**https://www.facebook.com/URPJSU/**](https://www.facebook.com/URPJSU/)