

Jackson State University
NSF HBCU-UP Outreach Workshop
November 20, 2014



Dr. Sylvia M. James
Director, Division of Human Resource Development
National Science Foundation

Framework

- ✓ **About NSF and the Directorate for Education and Human Resources (EHR)**
- ✓ FY 2015 Budget Request





NSF Strategic Plan 2014 to 2018

Core Values

- Scientific Excellence
- Organizational Excellence
- Learning
- Inclusiveness
- Accountability for Public Benefit



NSF Directorate for Education and Human Resources (EHR)

Mission Statement



NSF-supported Prairie View A&M Graduate Student

Support research and development on STEM education and learning to engage and grow a diverse, STEM-literate citizenry ready to advance the frontiers of science, and innovate for society



EHR Organization Chart

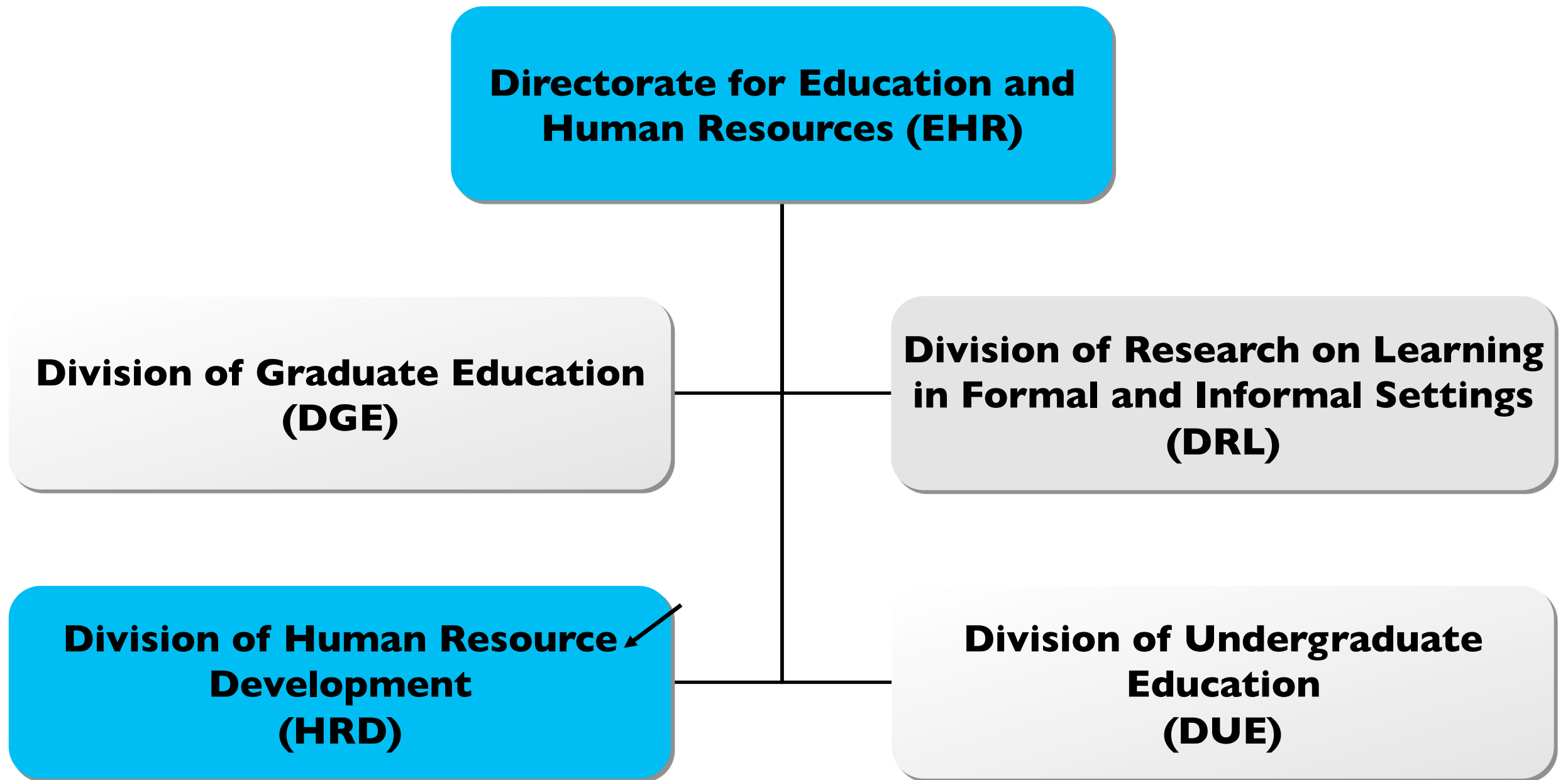
**Directorate for Education and
Human Resources (EHR)**

**Division of Graduate Education
(DGE)**

**Division of Research on Learning
in Formal and Informal Settings
(DRL)**

**Division of Human Resource
Development
(HRD)**

**Division of Undergraduate
Education
(DUE)**





EHR Investment Framework

Learning and
Learning
Environments

Broadening
Participation in
STEM

STEM Professional
Workforce



EHR Division of Human Resource Development (HRD) Leadership in FY 2015

- Expand our partnerships with other EHR divisions and other directorates across NSF.
- Collaborate with NSF Directorate for Social, Behavioral, and Economic Sciences to focus investments that advance our understanding of the factors and forces that affect participation of groups underrepresented in STEM.
- Provide strategic direction and program guidance for the Broadening Participation and Institutional Capacity component of EHR's core research and development activity.



HRD Programs

- Increasing the Participation and Advancement of Women in Academic Science and Engineering Careers (**ADVANCE**)
- Alliances for Graduate Education and the Professoriate (**AGEP**)
- Centers of Research Excellence in Science and Technology (**CREST**)
- Historically Black Colleges and Universities Undergraduate Program (**HBCU-UP**)
- Louis Stokes Alliances for Minority Participation (**LSAMP**)
- Tribal Colleges and Universities Program (**TCUP**)
- White House Initiatives/Presidential Awards for:
 - Excellence in Science, Mathematics, and Engineering Mentoring (**PAESMEM**)
 - Excellence in Mathematics and Science Teaching (**PAEMST**)



NATIONAL
SCIENCE
FOUNDATION

FISCAL
YEAR
2015

BUDGET
REQUEST



Sylvia M. James
Director, Division of Human
Resource Development

EHR Funding

(Dollars in Millions)

	FY 2013	FY 2014	FY 2015	Change Over FY 2014 Estimate	
	Actual	Estimate	Request	Amount	Percent
Division of Research on Learning in Formal and Informal Settings (DRL)	\$215.45	\$230.24	\$241.58	\$11.34	4.9%
Division of Graduate Education (DGE)	257.31	259.08	263.34	4.26	1.6%
Division of Human Resource Development (HRD)	139.18	142.11	143.11	1.00	0.7%
Division of Undergraduate Education (DUE)	222.68	215.07	241.72	26.65	12.4%
Total, EHR	\$834.62	\$846.50	\$889.75	\$43.25	5.1%

Totals may not add due to rounding.

Funding for the FY 2013 Actual and the FY 2014 Estimate are shown in the FY 2015 structure for comparability.

	FY 2013 Actual	FY 2014 Estimate	FY 2015 Request	Change Over FY 2014 Estimate	
				Amount	Percent
Total, HRD	\$139.18	\$142.11	\$143.11	\$1.00	0.7%
Learning and Learning Environments	51.24	54.81	54.81	-	-
ADVANCE	1.35	1.53	1.53	-	-
Alliances for Graduate Education and the Professoriate (AGEP)	7.21	7.84	7.84	-	-
Historically Black Colleges and Universities Undergraduate Program (HBCU-UP)	30.30	31.94	31.94	-	-
Tribal Colleges and Universities Program (TCUP)	12.39	13.50	13.50	-	-
Broadening Participation & Institutional Capacity	60.28	58.50	59.50	1.00	1.7%
EHR Core Research (ECR): Broadening Participation and Institutional Capacity in STEM	18.26	12.88	13.88	1.00	7.8%
<i>Research on Education and Learning (REAL)</i> ¹	<i>[13.66]</i>	<i>[8.88]</i>	-	<i>N/A</i>	<i>N/A</i>
Louis Stokes Alliances for Minority Participation (LSAMP)	42.03	45.62	45.62	-	-
STEM Professional Workforce	27.66	28.80	28.80	-	-
Centers for Research Excellence in Science and Technology (CREST)	22.95	22.98	22.98	-	-
Excellence Awards in Science and Engineering (EASE)	4.70	5.82	5.82	-	-

National Science Foundation
EHR Division Crosswalk for the REAL and ECR Consolidation
FY 2015 Request

(Dollars in Millions)

	FY 2014 Format		FY 2015 Restated	
	FY 2013 Actual	FY 2014 Estimate	FY 2013 Actual	FY 2014 Estimate
Division of Research on Learning in Formal and Informal Settings (DRL)	\$256.42	\$261.23	\$215.45	\$230.24
ECR: STEM Learning	4.60	7.96	18.25	25.63
REAL	54.62	48.66	[13.66]	[17.67]
Division of Graduate Education (DGE)	\$243.65	\$248.07	\$257.31	\$259.08
ECR: STEM Profesional Workforce Preparation	4.60	4.96	18.26	15.97
REAL	-	-	[13.66]	[11.01]
Division of Human Resource Development (HRD)	\$125.53	\$133.23	\$139.18	\$142.11
ECR: Broadening Participation and Institutional Capacity in STEM	4.60	4.00	18.26	12.88
REAL	-	-	[13.66]	[8.88]
Division of Undergraduate Education (DUE)	\$209.02	\$203.97	\$222.68	\$215.07
ECR: STEM Learning Environments	4.60	5.00	18.25	16.10
REAL	-	-	[13.66]	[11.10]
Total, EHR	\$834.62	\$846.50	\$834.62	\$846.50
Total, ECR	18.39	21.92	73.02	70.58
Total, REAL	54.62	48.66	[54.62]	[48.66]

Totals may not add due to rounding.



Thank You!

All solicitations for HRD programs, go to:

<http://www.nsf.gov/div/index.jsp?div=HRD>

Contact information: sjames@nsf.gov